



PARTS BOOK

PS6180

MANURE SPREADER

Part #92784

Rev. #01

HSMFG101823

Starting Ser. #421PS80001

FIGURE #	CONTENTS	PAGE #
*	INSTRUCTIONS FOR ORDERING PARTS	1
1	FRONT POLE & COMPONENTS	2-3
2	DRIVE SHAFT & COMPONENTS	4-5
3	AXLE & COMPONENTS	6
4	HUB & WHEEL ASSEMBLY	7
5	PTO SHIELD & COMPONENTS	8
6	FRONT APRON SHIELD & COMPONENTS	9
7	FLOOR	10
8	STONE GUARD & COMPONENTS	11
9	REAR APRON DRIVESHAFT & CHAIN	12-13
10	ENDGATE & COMPONENTS	14-15
11	BEATERS & COMPONENTS	16-17
12	BEATERS	18
13	BEATER PAN & COMPONENTS	19
14	HYDRAULICS	20-21
15	GREASE LINES	22
16	HYDRAULIC MOTOR & COMPONENTS	23
17	PTO & COMPONENTS	24-25
18	GEARBOX ASSEMBLY, BEATER	26-27
19	GEARBOX ASSEMBLY, APRON	28-29
20	LIGHTS	30
21	OPTIONAL CHOSCH - SWIVEL DOUBLE CLEVIS HITCH	31
22	OPTIONAL HTCHB4 AND HTCHB5 - BULLNOSE HITCHES	32
23	OPTIONAL HTCHC - CLEVIS HITCH	33
24	OPTIONAL PSO4WBRK - 4 WHEEL BRAKE PACKAGE - FACTORY INSTALLED	34-35
25	OPTIONAL PSO1034CVP - 1-3/4" 1000 RPM CV PTO	36
26	OPTIONAL PSO1038CVP - 1-3/8" 1000 RPM CV PTO	37
28	OPTIONAL PSOHALC - HYDRAULIC ACTUATOR LIGHT COVERS	38-39
29	OPTIONAL PSORVP - REVERSER VALVE PACKAGE	40-41
30	OPTIONAL PSOS800 - 5-POINT SCALE	42-43
31	OPTIONAL PSOVSEC - HYDRAULIC VARIABLE SPEED APRON CONTROL	44-45
32	OPTIONAL SCALE DISPLAYS	46-47
33	OPTIONAL TWP700S - (4) 700/50 X 22.5 FLOTATION TIRES/RIMS	48
34	OPTIONAL TWP70026S - (4) 700/50 X 26.5 FLOTATION TIRES/RIMS	49
35	OPTIONAL PSOCJACK - CRANK JACK	50
36	OPTIONAL PSOHJACK - HYDRAULIC JACK	51
*	PARTS NOTES	52



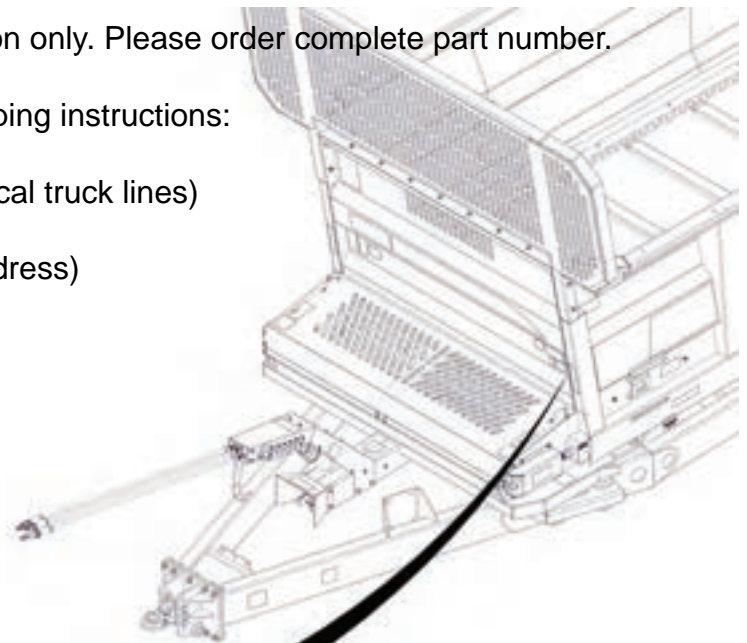
INSTRUCTIONS FOR ORDERING PARTS

All service parts should be ordered through your authorized H&S dealer. Your Dealership will be able to give you faster service if you will provide them with the following:

1. All references to left or right apply to the machine as viewed from the rear.
2. Parts should not be ordered from illustration only. Please order complete part number.
3. If your dealer has to order parts, give shipping instructions:

VIA truck - large pieces (please specify local truck lines)

VIA United Parcel Service (include full address)



H&S MFG. CO. INC. MARSHFIELD, WIS.	
MOD. NO.	<input type="text"/>
SER. NO.	<input type="text"/>
DESCR.	<input type="text"/>

PLEASE RECORD NUMBERS FOR YOUR UNIT FOR QUICK REFERENCE

H&S IS CONTINUALLY STRIVING TO IMPROVE ITS PRODUCTS

We must, therefore, reserve the right to make improvements or changes whenever it becomes practical to do so, without incurring any obligation to make changes or additions to the equipment previously sold.





FIGURE 1
FRONT POLE & COMPONENTS

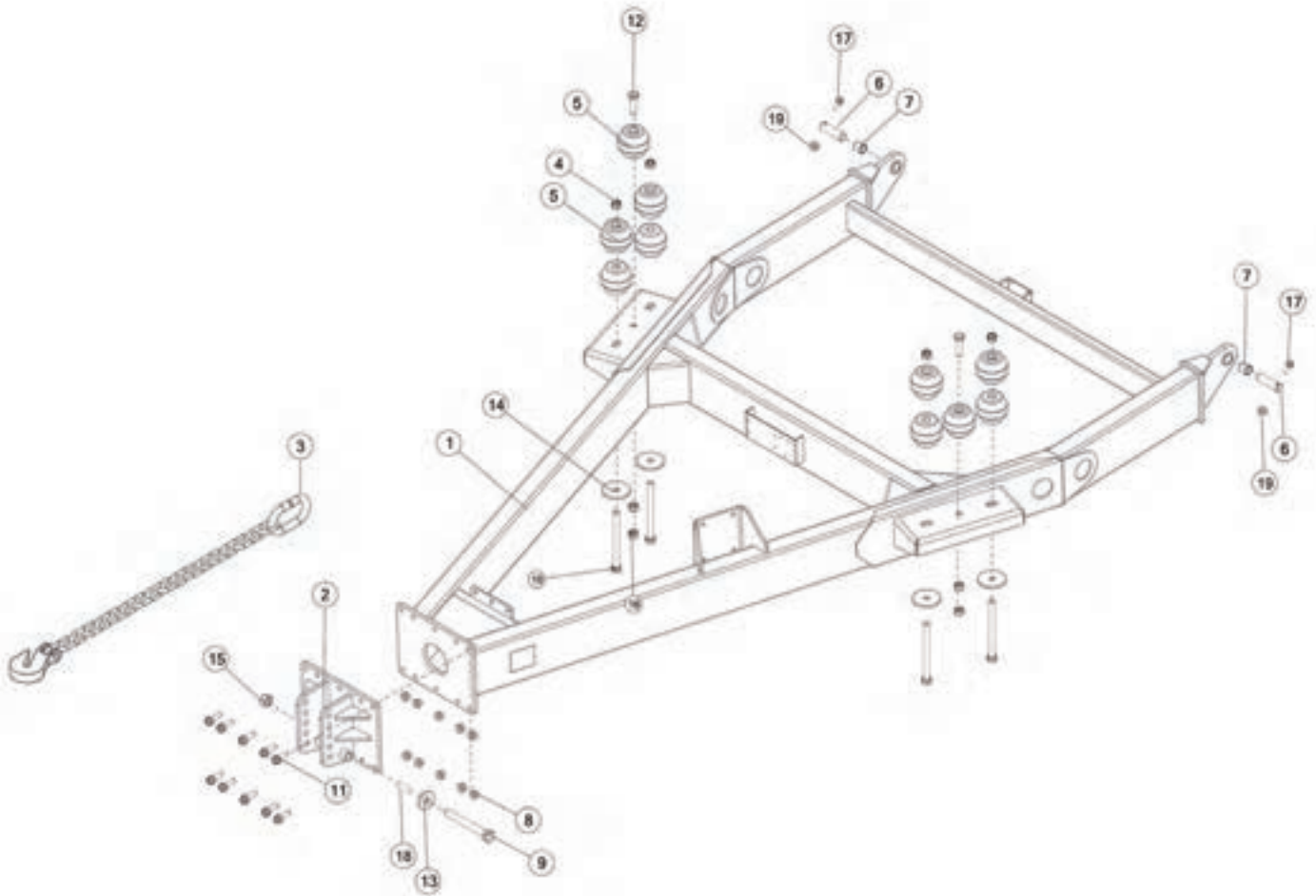


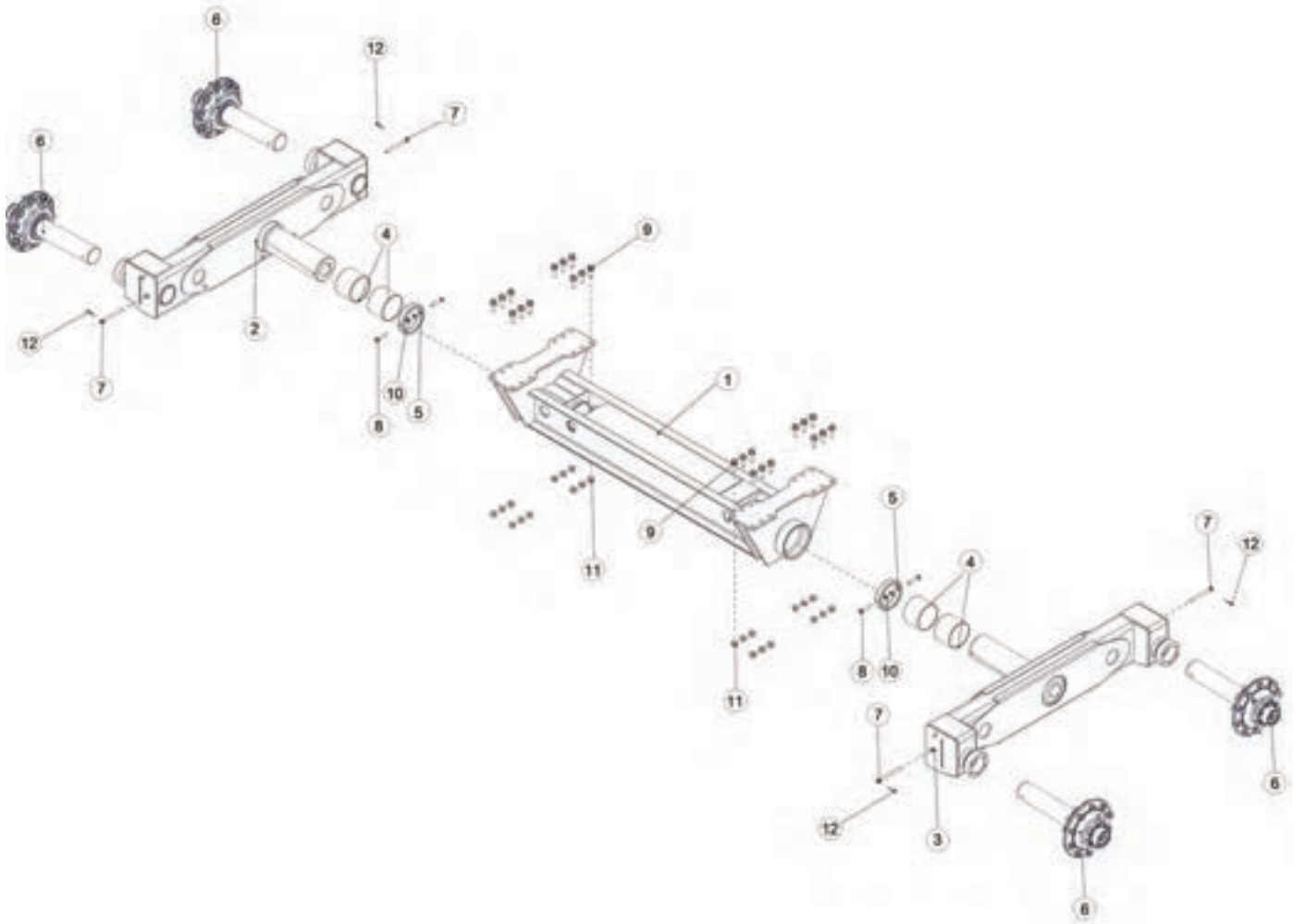


FIGURE 2
DRIVE SHAFT & COMPONENTS





FIGURE 3 AXLE & COMPONENTS

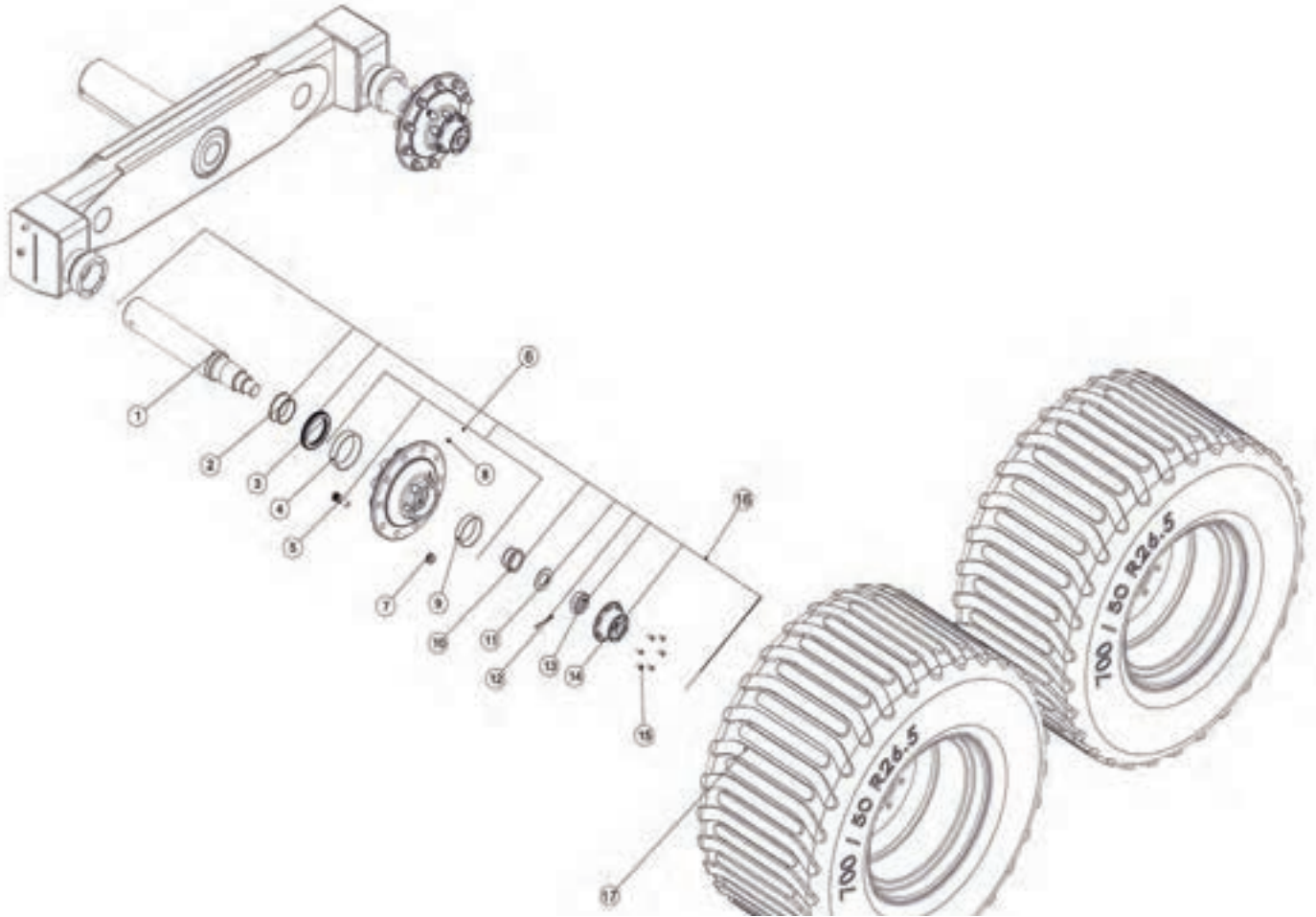


REF #	PART #	DESCRIPTION	QTY
1	90418	AXLE BUNK	1
2	91088	OSCILLATING TANDEM AXLE, RH	1
3	91089	OSCILLATING TANDEM AXLE, LH	1
4	58805	BUSHING, NYLATRON, 7 OD X 6-1/2 ID X 5	4
5	APX4TU08	TANDEM COLLAR	2
6	90394	HUB, OIL BATH ASSY	4
7	TS260	SPINDLE PIN	4
8	YBHH20060	BOLT HEX, 5/8 X 3-1/4 G5	4
9	YBFB24250	BOLT FLANGE, 3/4 X 2-1/2 G5	24
10	YNL20005	NUT HEX, 5/8-11 LKTL C ZC	4
11	YNFG24006	NUT FLANGE, 3/4-10 LKTL G ZC	24
12	YPCT06020	COTTER PIN, 3/16 X 2	4





FIGURE 4 HUB & WHEEL ASSEMBLY



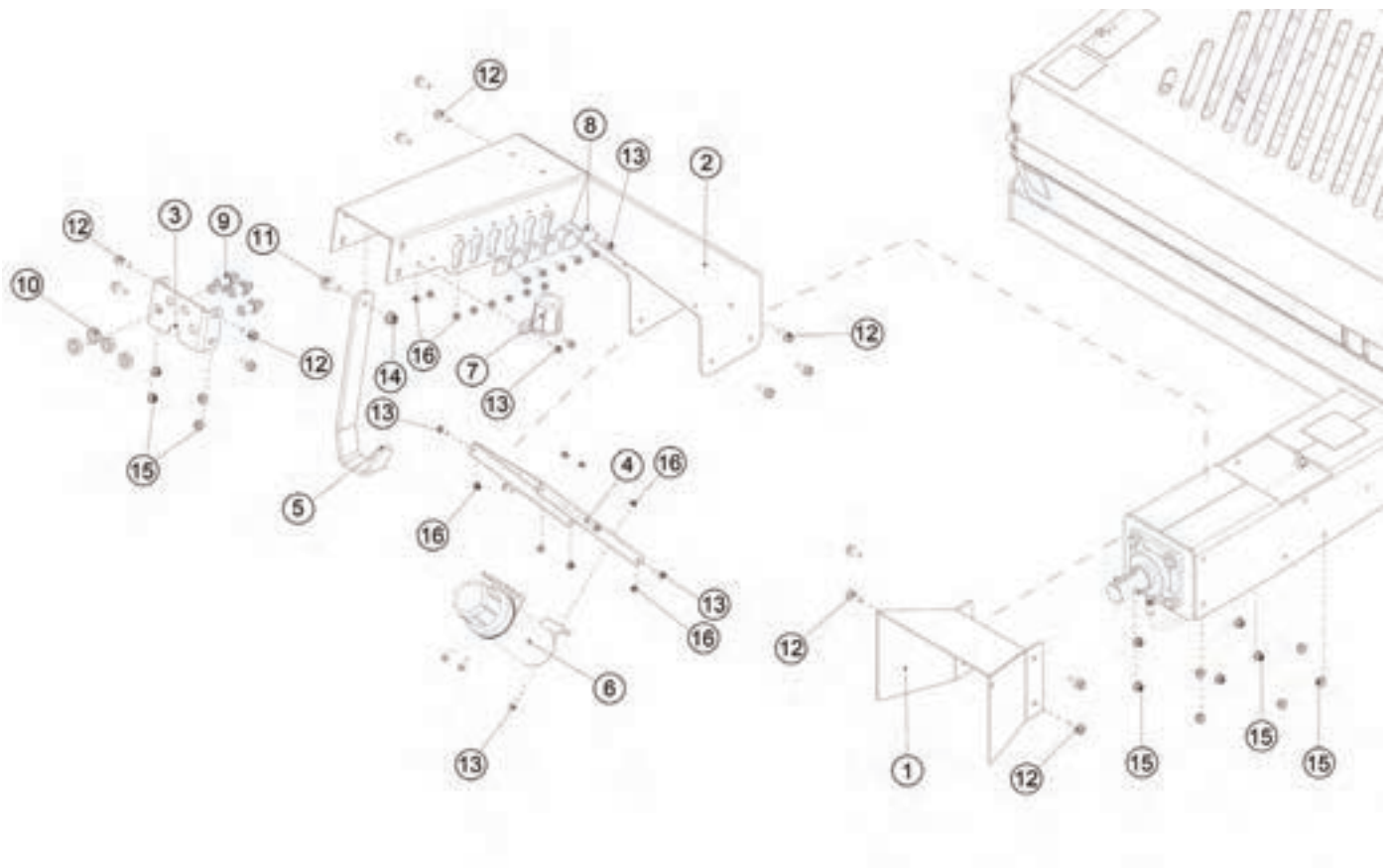
REF #	PART #	DESCRIPTION	QTY
1	TS394	SPINDLE FOR 891 HUB	4
2	TS388	INNER BEARING	4
3	90298	OIL BATH SEAL	4
4	TS389	INNER RACE	4
5	YBSD24010	BOLT STUD, 3/4 X 2-3/4 G8	40
6	90288	HUB SUB ASSEMBLY	4
7	BFR618	FLANGE NUT, 3/4-16 NF	40
8	BFR28	GREASE ZERK, 1/8 NPT	4
9	TS390	OUTER RACE	4
10	TS391	OUTER BEARING	4
11	90290	WASHER	4
12	YPEX12350	EXPANSION PIN, 5/16 X 3	4
13	YNSL44005	NUT SLOT, 2-12 NA G2 NF	4
14	90291	OIL BATH CAP	4
15	YBHH10105	BOLT HEX, 5/16 X 3/4 G5	24
16	90394	HUB, OIL BATH ASSY	4
17	93980	ASSEMBLY, TIRE AND WHEEL, LH	2
*	93981	ASSEMBLY, TIRE AND WHEEL, RH	2





FIGURE 5

PTO SHIELD & COMPONENTS

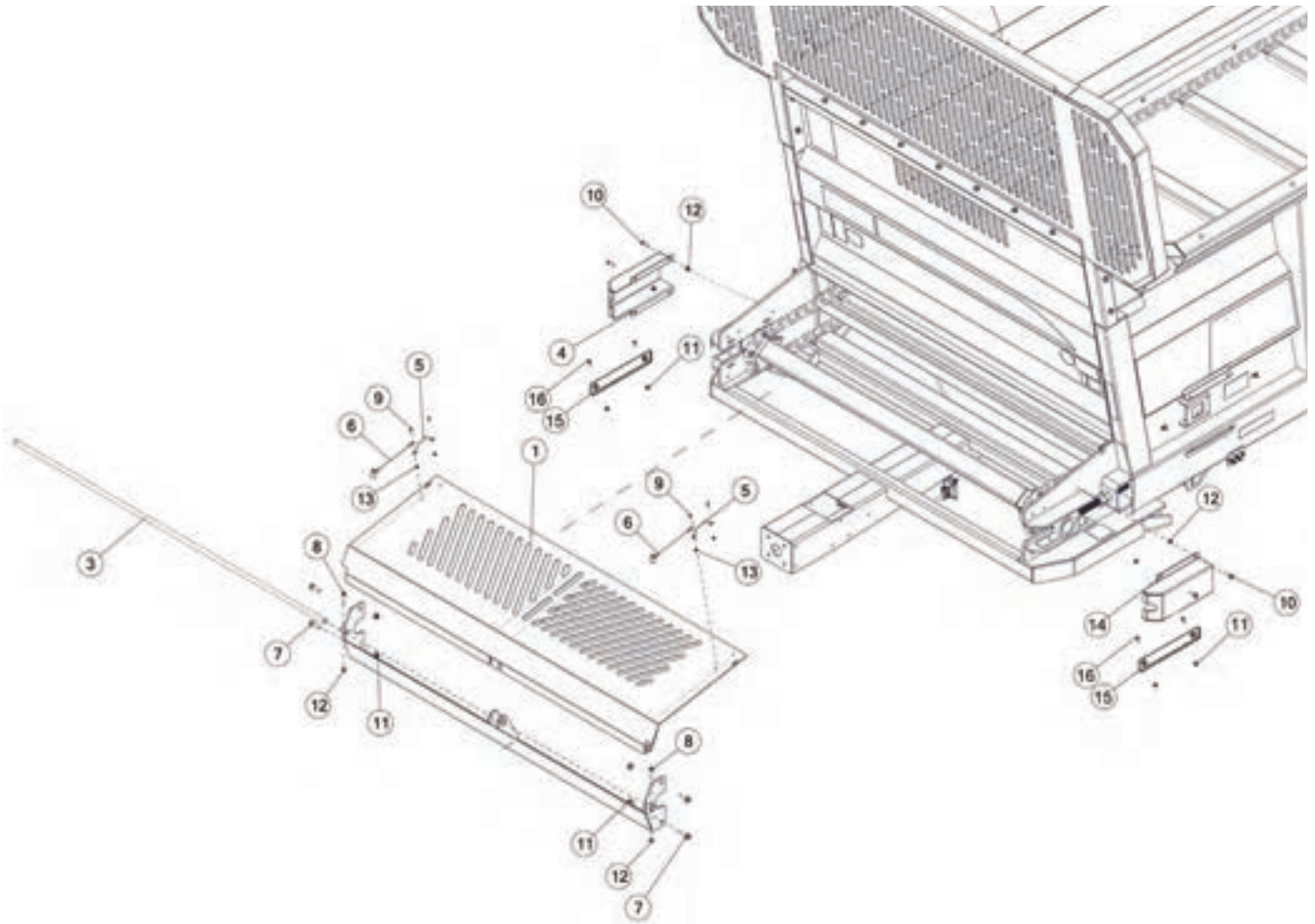


REF #	PART #	DESCRIPTION	QTY
1	92470B	PTO SHIELD W/DECALS	1
2	92759B	HOSE HOLDER W/DECALS	1
3	92756	BULKHEAD MOUNT	1
4	92766	COVER PLATE	1
5	92761	PTO HOLDER	1
6	S522	MANUAL HOLDER	1
7	CHM38	PLUG STORAGE	1
8	77200	PLATE, 1.75 X 1.50 X 0.19	6
9	59448	FITTING STRAIGHT, 8JIC, 8JIC, BULKHEAD	4
10	YNJM24012	NUT JAM, 3/4 A	4
11	YBFB16125	BOLT FLANGE, 1/2 X 1-1/4 G5	1
12	YBFB12003	BOLT FLANGE, 3/8 X 1 G5	14
13	YBFB08075	BOLT FLANGE, 1/4 X 3/4 G5	15
14	YNFG16003	NUT FLANGE, 1/2 GF	1
15	YNFG12006	NUT FLANGE, 3/8 GF	14
16	YNFG08010	NUT FLANGE, 1/4 GF	15



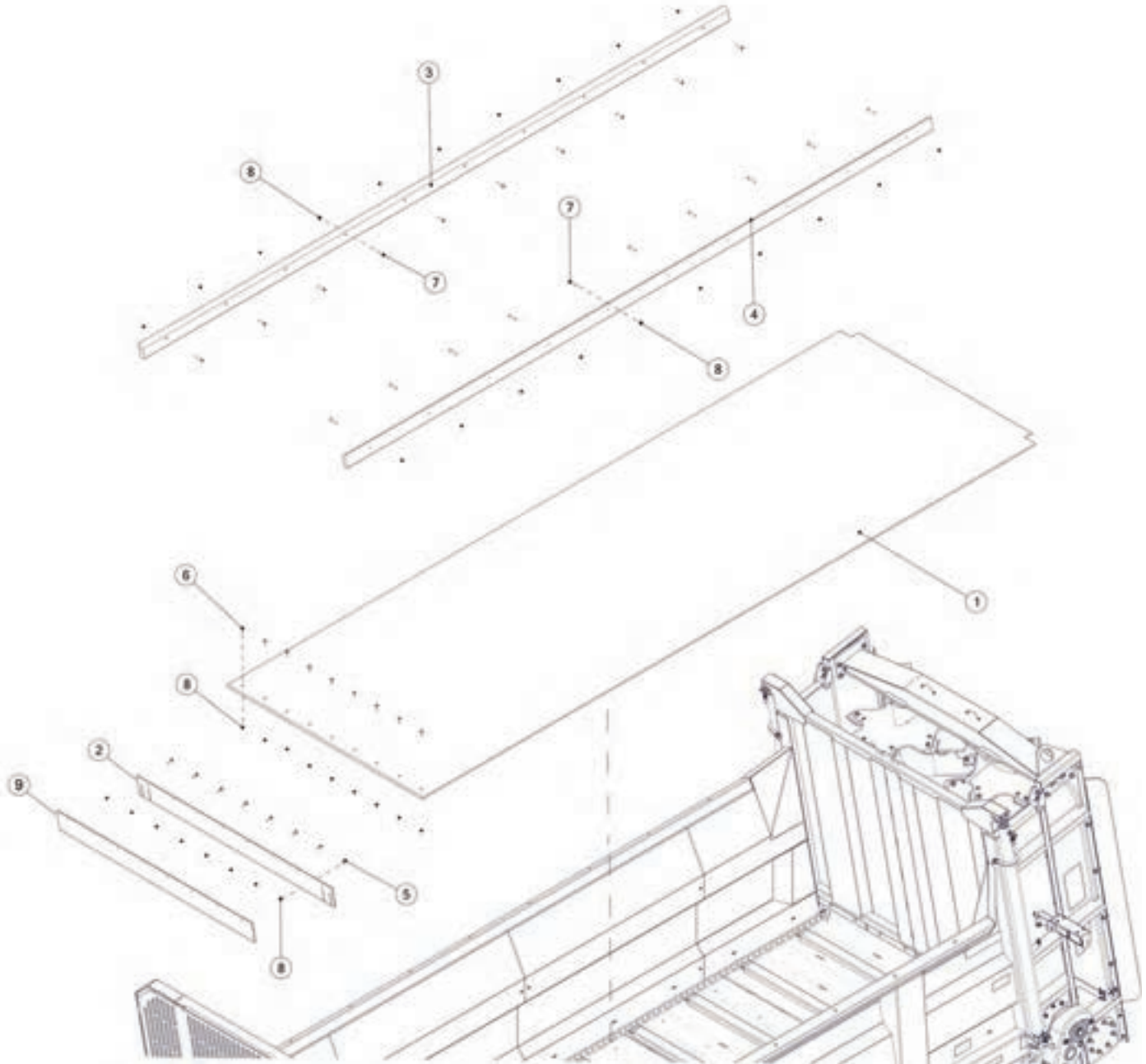


FIGURE 6 FRONT APRON SHIELD & COMPONENTS



REF #	PART #	DESCRIPTION	QTY
1	90411B	APRON SHIELD, FRONT W/DECALS	1
2	90340B	APRON SHIELD PIVOT W/DECALS	1
3	90341	FRONT SHIELD PIVOT	1
4	94732B	IDLER SUPPORT COVER RH W/DECALS	1
5	TS96	SHIELD HANDLE	2
6	S122	LANYARD, CLIP PIN CABLE	2
7	YBFB16175	BOLT FLANGE, 1/2 X 1-3/4 G5	4
8	YBFB12200	BOLT FLANGE, 3/8 X 2 G5	2
9	YBHH08100	BOLT HEX, 1/4-20 X 3/4 G5	4
10	YBFB12125	BOLT FLANGE, 3/8 X 1-1/4 G5	4
11	YNFG16003	NUT FLANGE, 1/2 GF	8
12	YNFG12006	NUT FLANGE, 3/8 GF	6
13	YNFG08010	NUT FLANGE, 1/4 GF	4
14	94631B1	IDLER SUPPORT COVER LH W/DECALS	1
15	91138	GUIDE PLATE	2
16	YSFS16010	BOLT FLAT SOK, 1/2-13 X 1-1/2 ZC	4





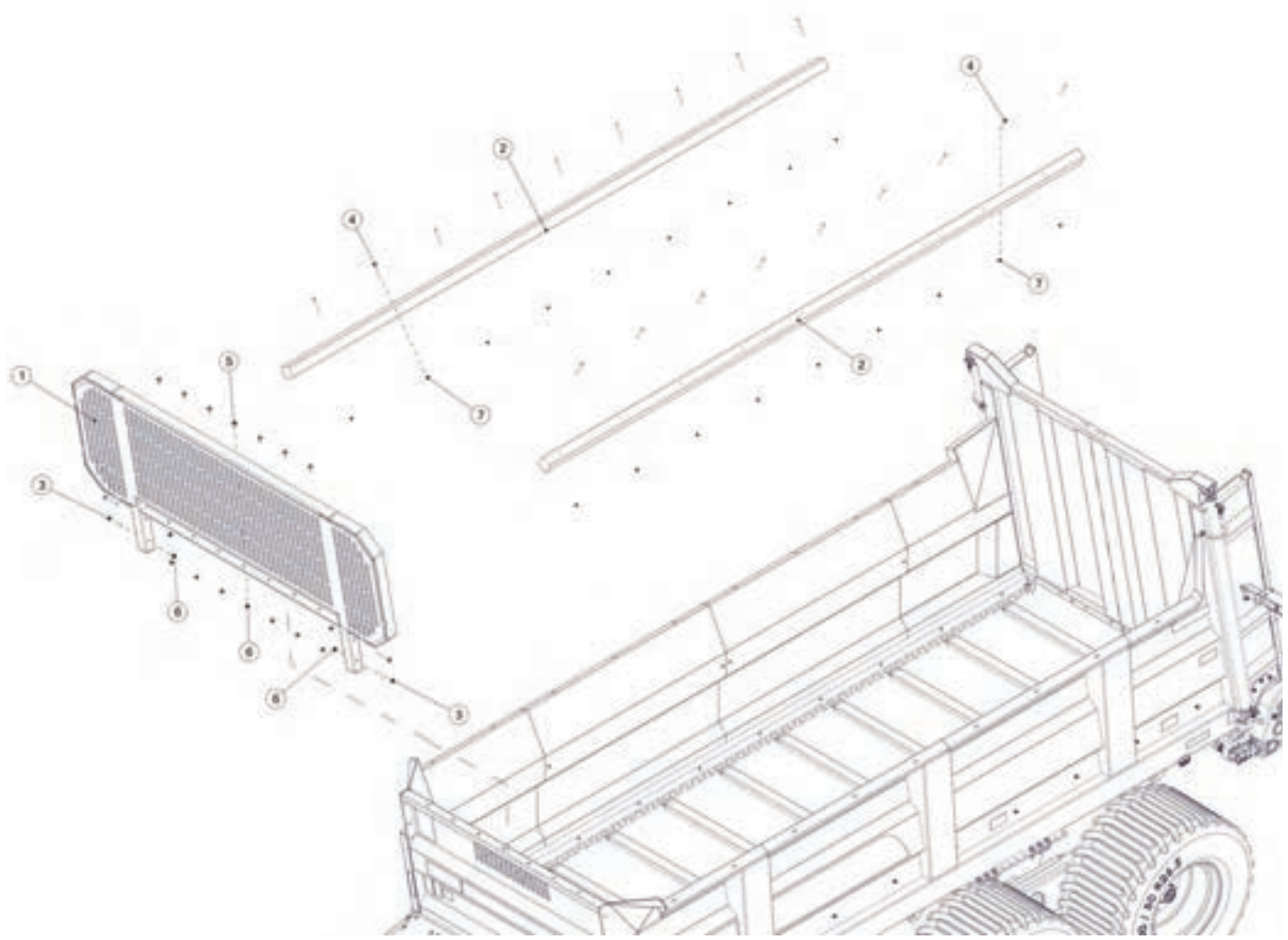
REF #	PART #	DESCRIPTION	QTY
1	92683	POLY FLOOR	1
2	91199	RUBBER SEAL	1
3	90733	APRON GUIDE, RH	1
4	90374	APRON GUIDE, LH	1
5	YBCR12020	BOLT CARRIAGE, 3/8-16 X 1-1/4 G5 ZC	5
6	YSFS12016	BOLT FLAT SOK, 3/8-16X1-1/2 ZC	9
7	YSFS12250	BOLT FLAT SOK, 3/8-16 X 2-1/2 ZC	20
8	YNFG12006	NUT FLANGE, 3/8 GF	34
9	91201	RUBBER HOLDDOWN PLATE	1





FIGURE 8

STONE GUARD & COMPONENTS



REF #	PART #	DESCRIPTION	QTY
1	90474	STONE GUARD	1
2	90470	POLY LUMBER, 3-1/2 X 3-1/2	2
3	YBFB16450	BOLT FLANGE, 1/2 X 4-1/2 G5	4
4	YBCR12105	BOLT CARRIAGE, FT, 3/8-16 X 4-1/2 G5 ZC	18
5	YBFB16125	BOLT FLANGE, 1/2 X 1-1/4 G5	7
6	YNFG16003	NUT FLANGE, 1/2 GF	11
7	YNFG12006	NUT FLANGE, 3/8 GF	25



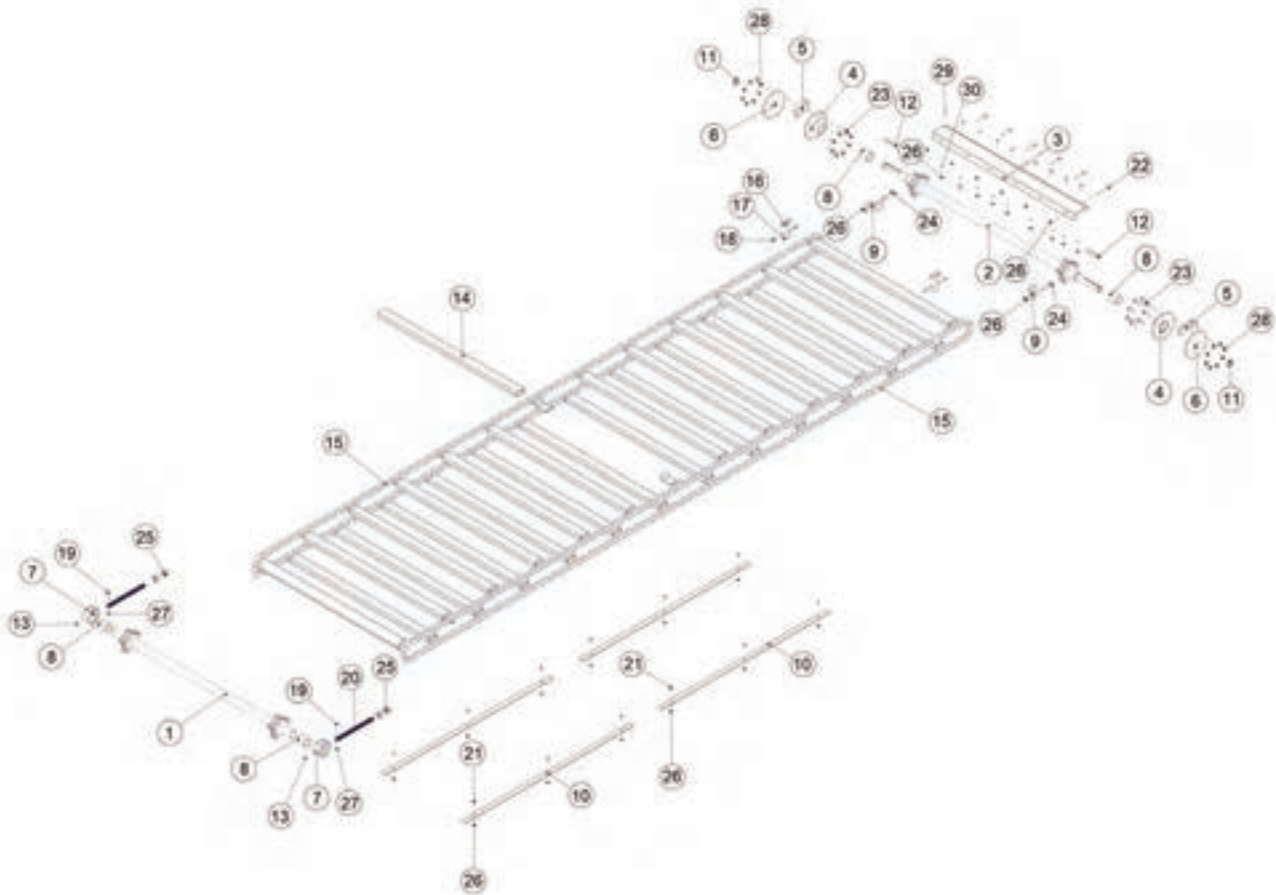




FIGURE 9

REAR APRON DRIVESHAFT & CHAIN

REF #	PART #	DESCRIPTION	QTY
1	90680	APRON IDLER	1
2	90708	APRON DRIVESHAFT	1
3	94988	DRIVESHAFT COVER	1
4	90706	DRIVESHAFT HOLDER	2
5	94983	FILLER PLATE	2
6	91539	MOUNTING FLANGE	2
7	90329	IDLER SHAFT HOLDER	2
8	96708	POLY BUSHING, 3-1/64 X 3	4
9	94984	SPROCKET CLEANER	2
10	97032	APRON SLIDE	2
11	88674	SNAP RING, EXTERNAL	2
12	90715	SQUARE KEY, 16MM X 5-15/16	2
13	BFR28	GREASE ZERK, 1/8 NPT	2
14	90454	APRON SLAT	25
15	94795	APRON CHAIN, #80, 249P	2
16	91167	CONNECTOR PLATE	2
17	91071	CONNECTOR ROD	2
18	YPCT08007	COTTER PIN, 1/4 X 2	4
19	YBHH10085	BOLT HEX, 5/16 X 2-1/4 G5	2
20	90331	TENSIONER ROD	2
21	YSFS12250	BOLT FLAT SOK, 3/8-16 X 2-1/2 ZC	14
22	YBFB12400	BOLT FLANGE, 3/8 X 4 G5	6
23	YBFB16200	BOLT FLANGE, 1/2 X 2 G5	16
24	YBFB12450	BOLT FLANGE, 3/8 X 4-1/2 G5	4
25	YNAC36010	NUT HEX, ACME, 1-1/4-5 NA A NF	4
26	YNFG12006	NUT FLANGE, 3/8 GF	33
27	YNFG10005	NUT FLANGE, 5/16 GF	2
28	YNFG16003	NUT FLANGE, 1/2 GF	16
29	YSFS12016	FLAT HEAD SOCKET CAP SCREW, 3/8"-16 X 1-1/2	9
30	YWFL12005	WASHER FLAT , 3/8 G5	9



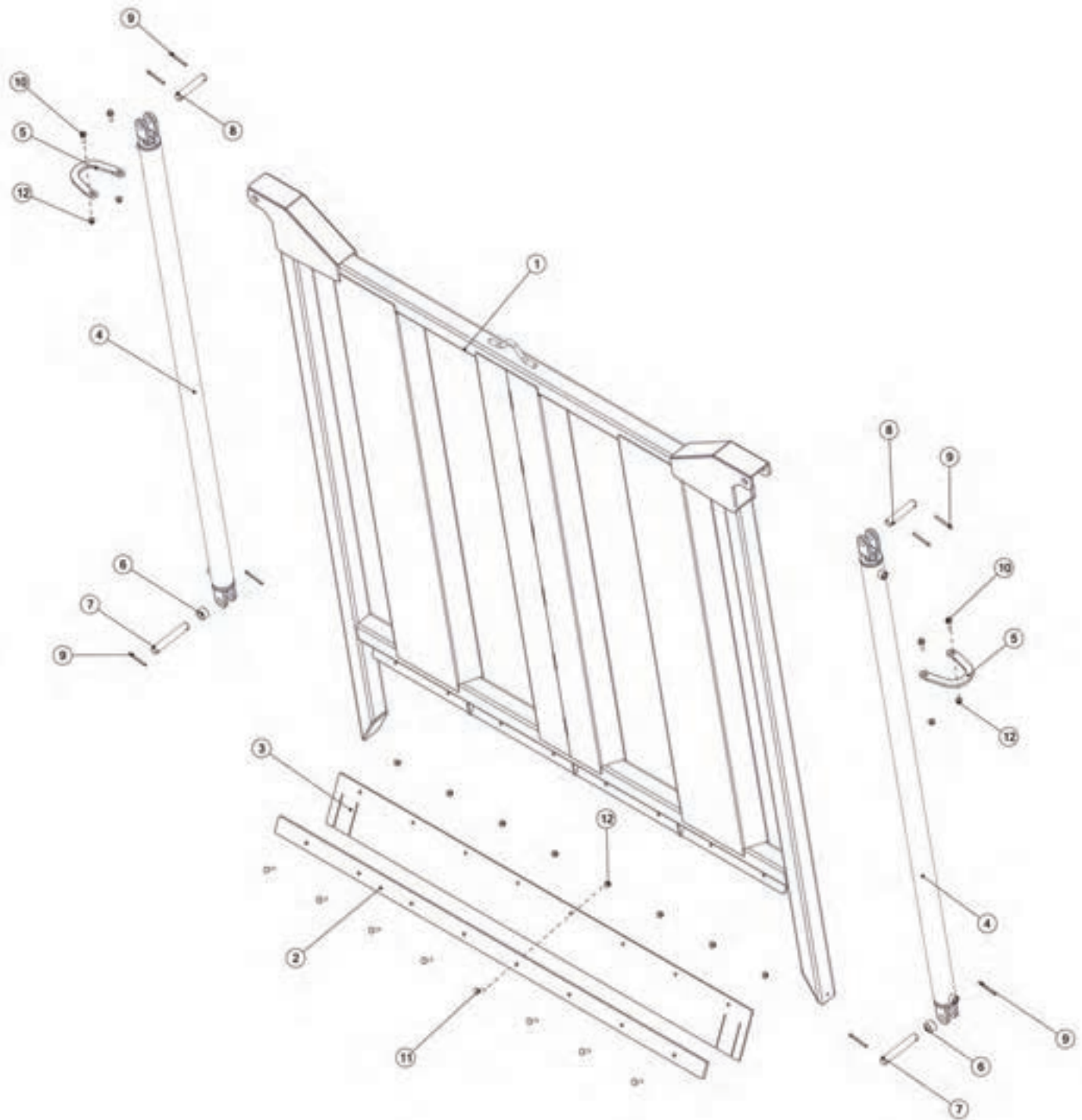




FIGURE 10 ENDGATE & COMPONENTS

REF #	PART #	DESCRIPTION	QTY
1	90719	ENDGATE	1
2	91589	SEAL MOUNT	1
3	91199	RUBBER SEAL	1
4	88127	HYDRAULIC CYLINDER, 2.5 X 72	2
5	91177	CYLINDER HOLDER	2
6	94822	SPACER, CYLINDER PIN	2
7	91173	CYLINDER PIN, 6-1/4	2
8	91174	CYLINDER PIN, 5	2
9	YPCT08010	COTTER PIN, 1/4 X 2-1/2	8
10	YBFB12125	BOLT FLANGE, 3/8 X 1-1/4 G5	4
11	YBCR12015	BOLT CARRIAGE, 3/8-16 X 1-1/2 G5 ZC	8
12	YNFG12006	NUT FLANGE, 3/8 GF	12





FIGURE 11

BEATERS & COMPONENTS

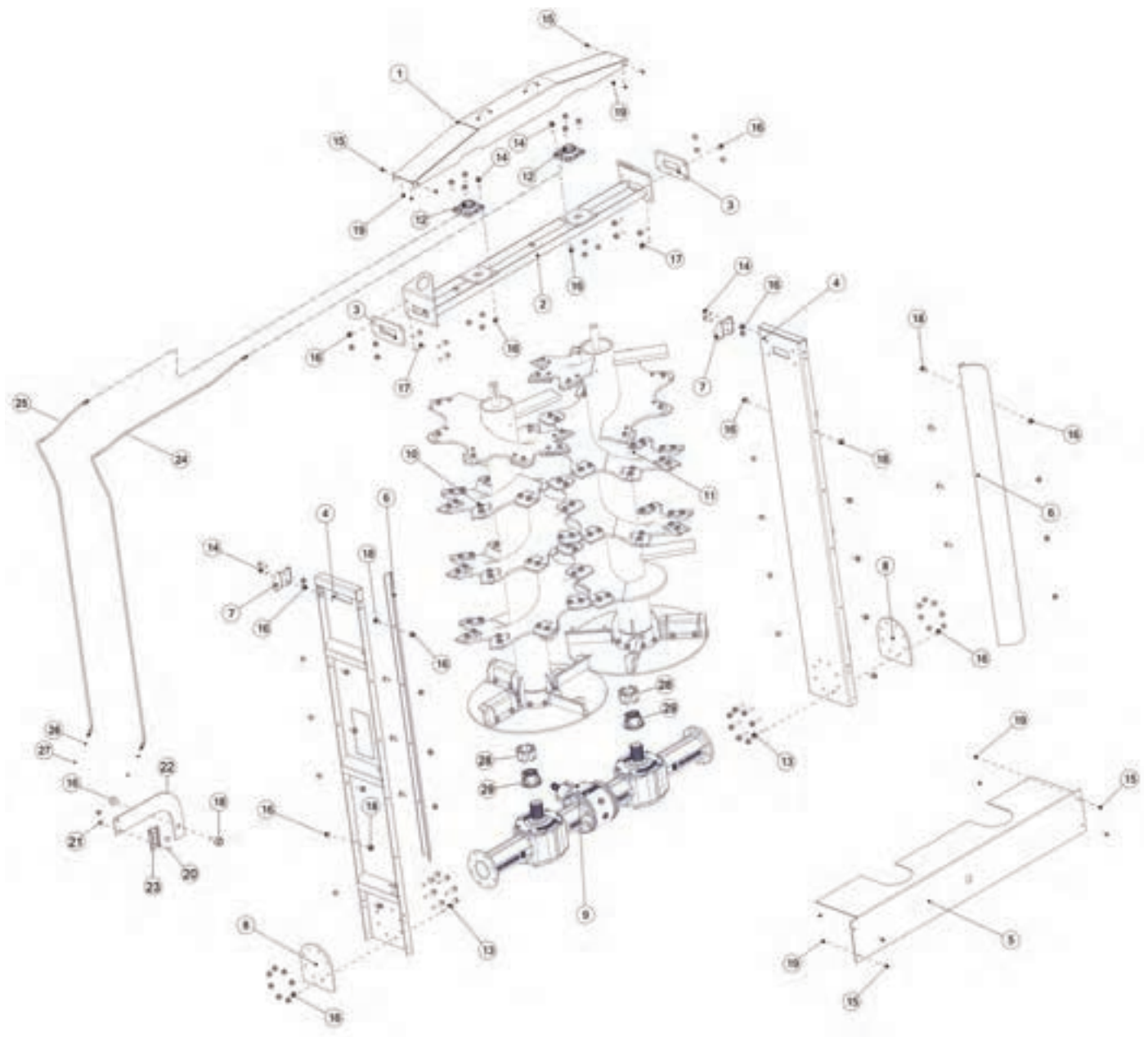


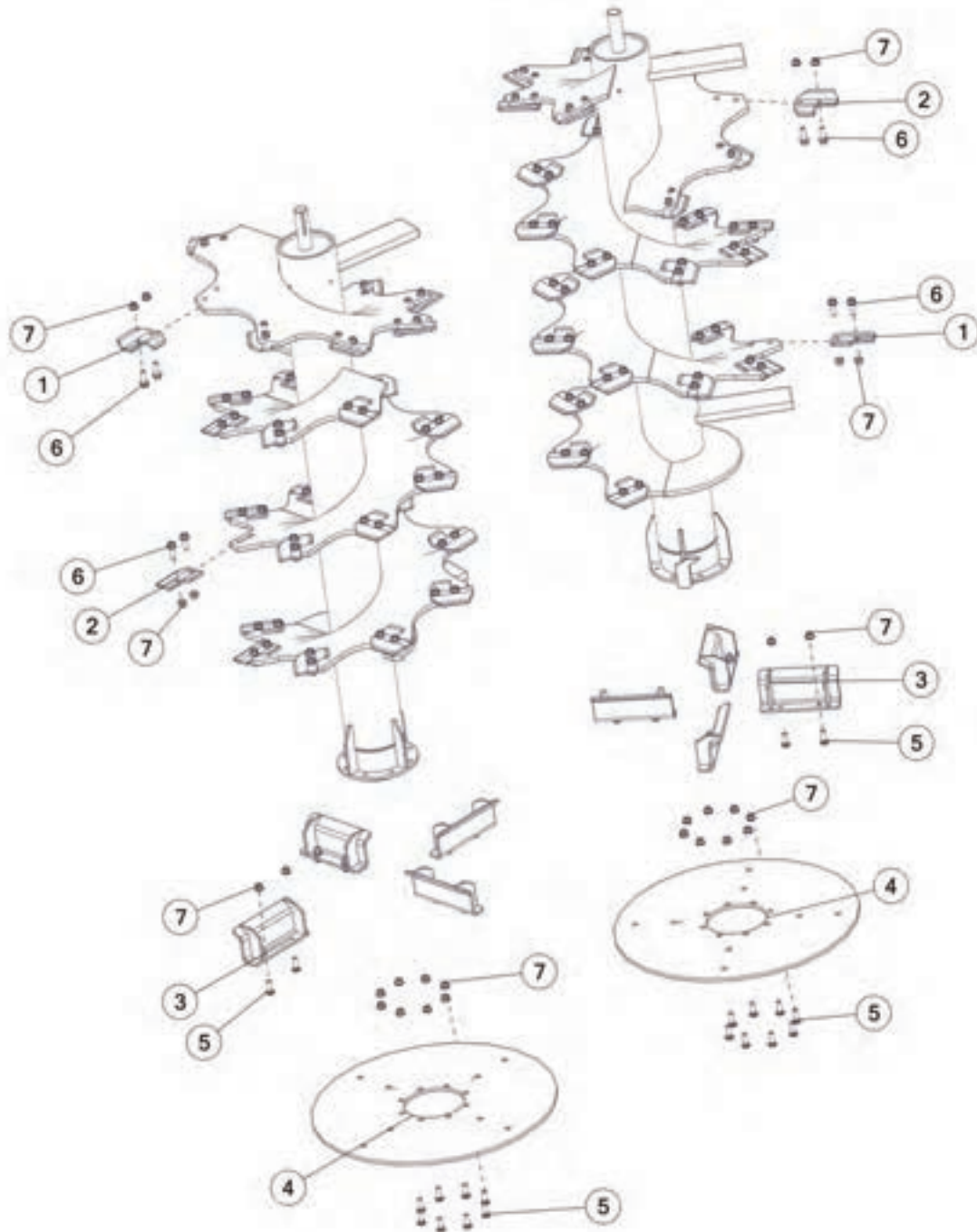


FIGURE 11

BEATERS & COMPONENTS

REF #	PART #	DESCRIPTION	QTY
1	91453B	BEARING SHIELD W/DECALS	1
2	91349B	UPPER BEARING MOUNT W/DECALS	1
3	91356	UPPER SUPPORT PLATE	2
4	91345B	BEATER PANEL W/DECALS	2
5	91470B	GEARBOX COVER W/DECALS	1
6	91699	BEATER DEFLECTOR	2
7	87761	BEATER HANGER WLDMT	2
8	91348	BEATER SUPPORT LEG	2
9	91306	GEARBOX ASSEMBLY, BEATER	1
10	91330	BEATER ASSEMBLY, LH	1
11	91331	BEATER ASSEMBLY, RH	1
12	56N74	FLANGE BEARING, 2	2
13	YBFB20300	BOLT FLANGE, 5/8 X 3 G5	17
14	YBFB20200	BOLT FLANGE, 5/8 X 2 G5	12
15	YBFB12125	BOLT FLANGE, 3/8 X 1-1/4 G5	8
16	YNFG20005	NUT FLANGE, 5/8-11 LKTL F ZC	46
17	YBFB20250	BOLT FLANGE, 5/8 X 2-1/2 G5	8
18	YBFB20150	BOLT FLANGE, 5/8 X 1-1/	19
19	YNFG12006	NUT FLANGE, 3/8 GF	8
20	YBCR10030	BOLT CARRIAGE, 5/16 X 3/4	2
21	YNFG10005	NUT FLANGE, 5-16	2
22	92783	SMV BRACKET	1
23	F97	SMV HOLDER	1
24	92172	GREASE HOSE, 3, 148	1
25	88907	GREASE HOSE, 3, 111	1
26	YNJM04005	NUT, JAM, 1/8 A	2
27	G89	STRAIGHT ZERK, 1/4-28 X 90	2
28	91320	POLY ROD	16
29	91318	BEATER DRIVE COUPLER	2





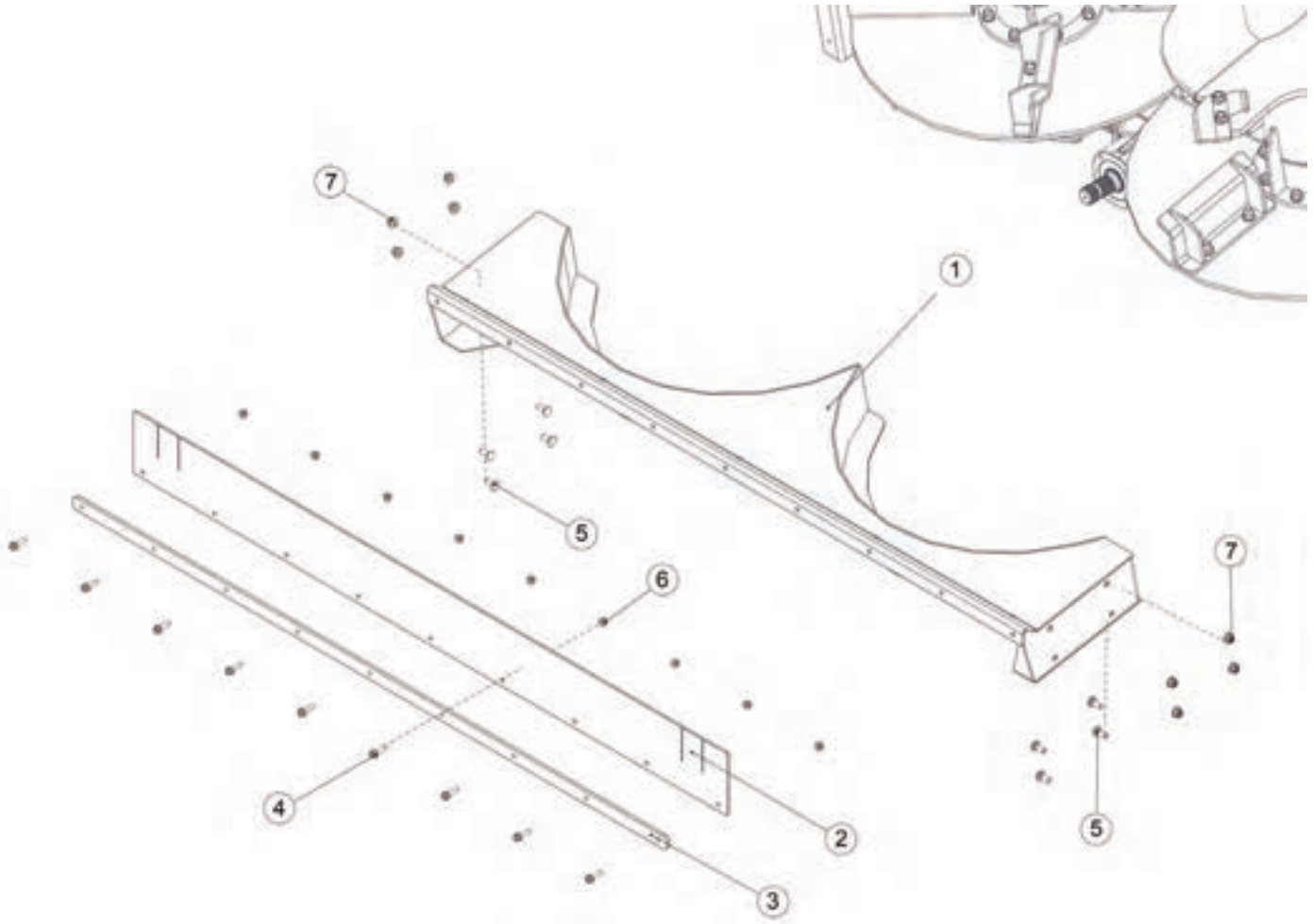
REF #	PART #	DESCRIPTION	QTY
1	HGV123	BEATER BLADE, RH	20
2	HGV122	BEATER BLADE, LH	20
3	91336	SPINNER BLADE ASSEMBLY	8
4	95220	BEATER DISK	2
5	YBCR20025	BOLT CARRIAGE, 5/8-11 X 2 G5 ZC	32
6	YBFB20200	BOLT FLANGE, 5/8 X 2 G5	112
7	YNFG20005	NUT FLANGE, 5/8-11 LKTL F ZC	144





FIGURE 13

BEATER PAN & COMPONENTS



REF #	PART #	DESCRIPTION	QTY
1	91476	BEATER PAN	1
2	92679	RUBBER SEAL	1
3	92680	APRON BELTING HOLDDOWN	1
4	YBFB12150	BOLT FLANGE, 3/8 X 1-1/2 G5	9
5	YBCR16015	BOLT CARRIAGE, 1/2-13 X 1-1/4 G5 ZC	8
6	YNFG12006	NUT FLANGE, 3/8 GF	9
7	YNFG16003	NUT FLANGE, 1/2 GF	8





FIGURE 14 HYDRAULICS

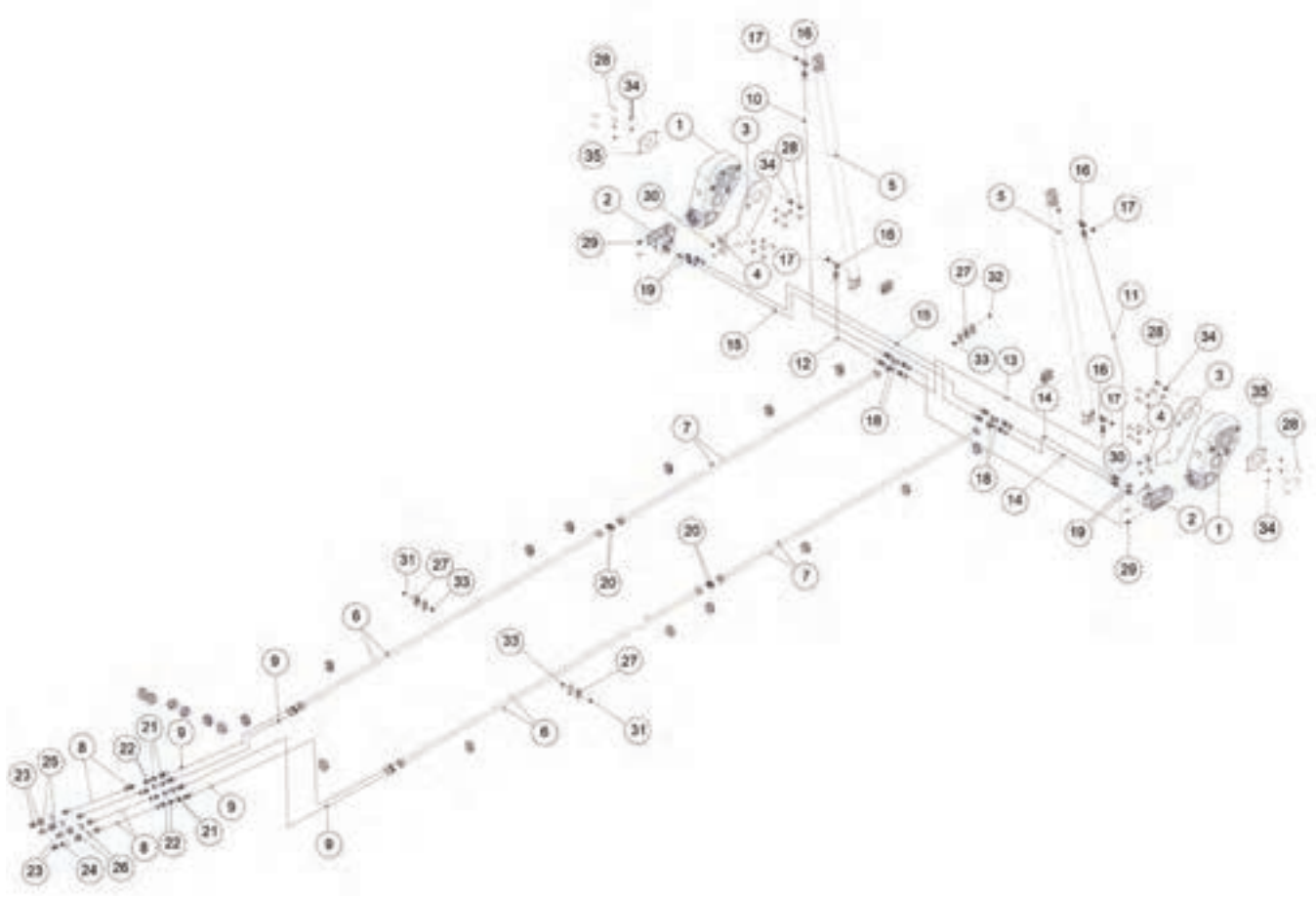


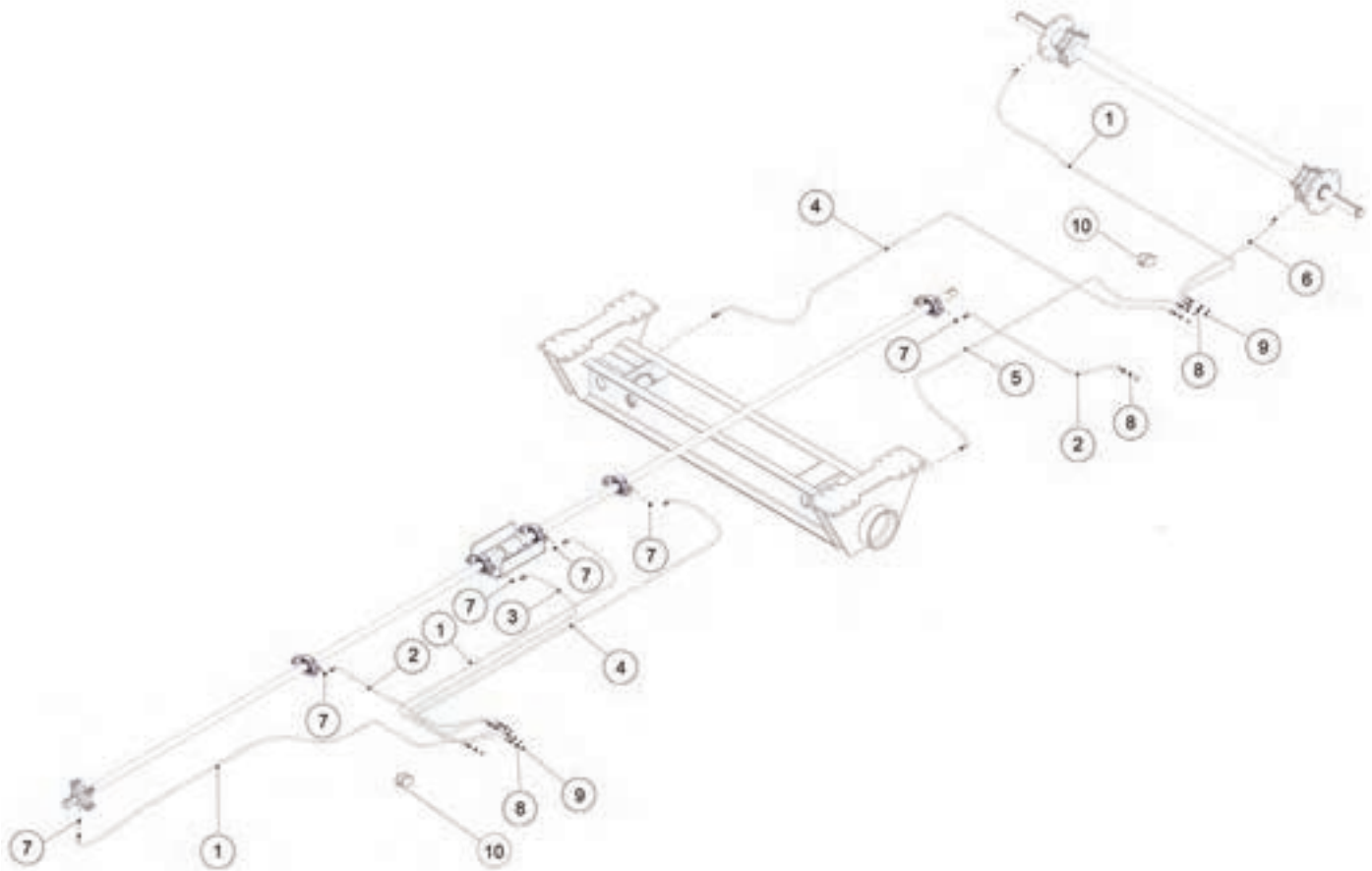


FIGURE 14

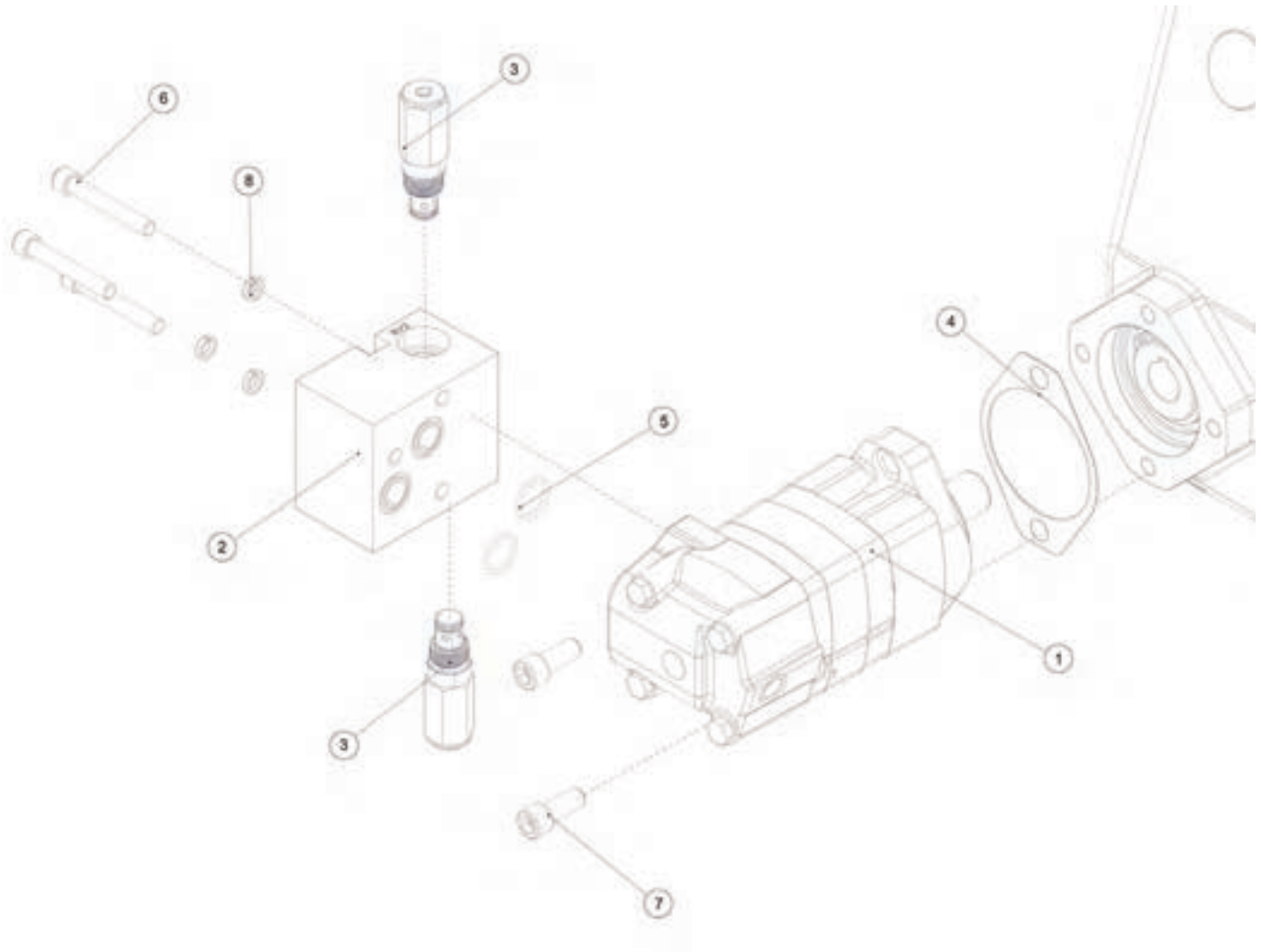
HYDRAULICS

REF #	PART #	DESCRIPTION	QTY
1	82387B	GEARBOX ASSEMBLY W/DECALS	2
2	95168	HYDRAULIC MOTOR	2
3	91690	GEARBOX PLATE	2
4	92689	GEARBOX STOP PLATE	2
5	88127	HYDRAULIC CYLINDER, 2.5 X 72	2
6	88529	HYDRAULIC TUBE, 5/8 X 119	4
7	94874	HYDRAULIC TUBE, 5/8 X 102	4
8	92769	HYDRAULIC HOSE, 8, 72	4
9	92765	HYDRAULIC HOSE, 8, 116	4
10	92728	HYDRAULIC HOSE, 8, 119	1
11	92731	HYDRAULIC HOSE, 8, 162	1
12	92729	HYDRAULIC HOSE, 8, 40	1
13	92734	HYDRAULIC HOSE, 8, 82	1
14	92740	HYDRAULIC HOSE, 8, 25	2
15	92741	HYDRAULIC HOSE, 8, 66	2
16	77465	FITTING, T, 8 JIC, 8 ORB, 8 JIC, STL	4
17	58163	JIC CAP	4
18	81633	FITTING, T, 10JIC, 10JIC, 10JIC, ST	4
19	GM57	FITTING, STRAIGHT, 10JIC, 10ORB, STL	4
20	83779	FITTING, STRAIGHT, 10 JIC, 10JIC	4
21	59448	FITTING, STRAIGHT, 8JIC, 8JIC, BULKHEAD	4
22	YNJM24012	NUT JAM, 3/4 A	4
23	67148	FITTING, STRAIGHT, 8ORB, QUICK COUPLER TIP	4
24	92767	HYDRAULIC VALVE, CHECK	1
25	94024	HOSE GRIPS, BLACK	2
26	94023	HOSE GRIPS, RED	2
27	86567	DOUBLE CLAMP, UNIVERSAL	53
28	YBHH80020	BOLT HEX, M14-2 X 35 8.8 ZC	22
29	YSHM78030	BOLT SOCKET, M12-1.75 X3 0 8.8 BO	4
30	YBHH12010	BOLT HEX, 3/8 X 1 G5	4
31	YBFB12250	BOLT FLANGE, 3/8 X 2-1/2 G5	21
32	YBFB12400	BOLT FLANGE, 3/8 X 4 G5	3
33	YNFG12006	NUT FLANGE, 3/8 GF	24
34	YWLO80020	WASHER, LOCK, 3/4	22
35	96782	GEARBOX SHAFT COVER	2





REF #	PART #	DESCRIPTION	QTY
1	92704	GREASE HOSE, 3, 116	3
2	92708	GREASE HOSE, 3, 56	2
3	89747	GREASE HOSE, 3, 100	1
4	92717	GREASE HOSE, 3, 144	2
5	92711	GREASE HOSE, 3, 106	1
6	89739	GREASE HOSE, 3, 45	1
7	TS323	FITTING STRAIGHT, 1/4-28, 1/8-27NPT	6
8	YNJM04005	NUT JAM, 1/8 A	10
9	G89	STRAIGHT ZERK, 1/4-28	10
10	96794	EDGE TRIM, 1/4 X 8-3/4	2



REF #	PART #	DESCRIPTION	QTY
1	95164	HYDRAULIC MOTOR	1
2	95165	RELIEF BLOCK	1
3	95169	RELIEF VALVE	2
4	94375	GASKET, HYDRAULIC MOTOR	1
5	95167	O-RING	2
6	YSHS12014	BOLT SOCKET, 3/8-16 X 2-1/2 BO	3
7	YSHM78030	BOLT SOCKET, M12-1.75 X 30 8.8 BO	2
8	YWHC12005	WASHER, LOCK, HI COLLAR, 3/8 ZC	3



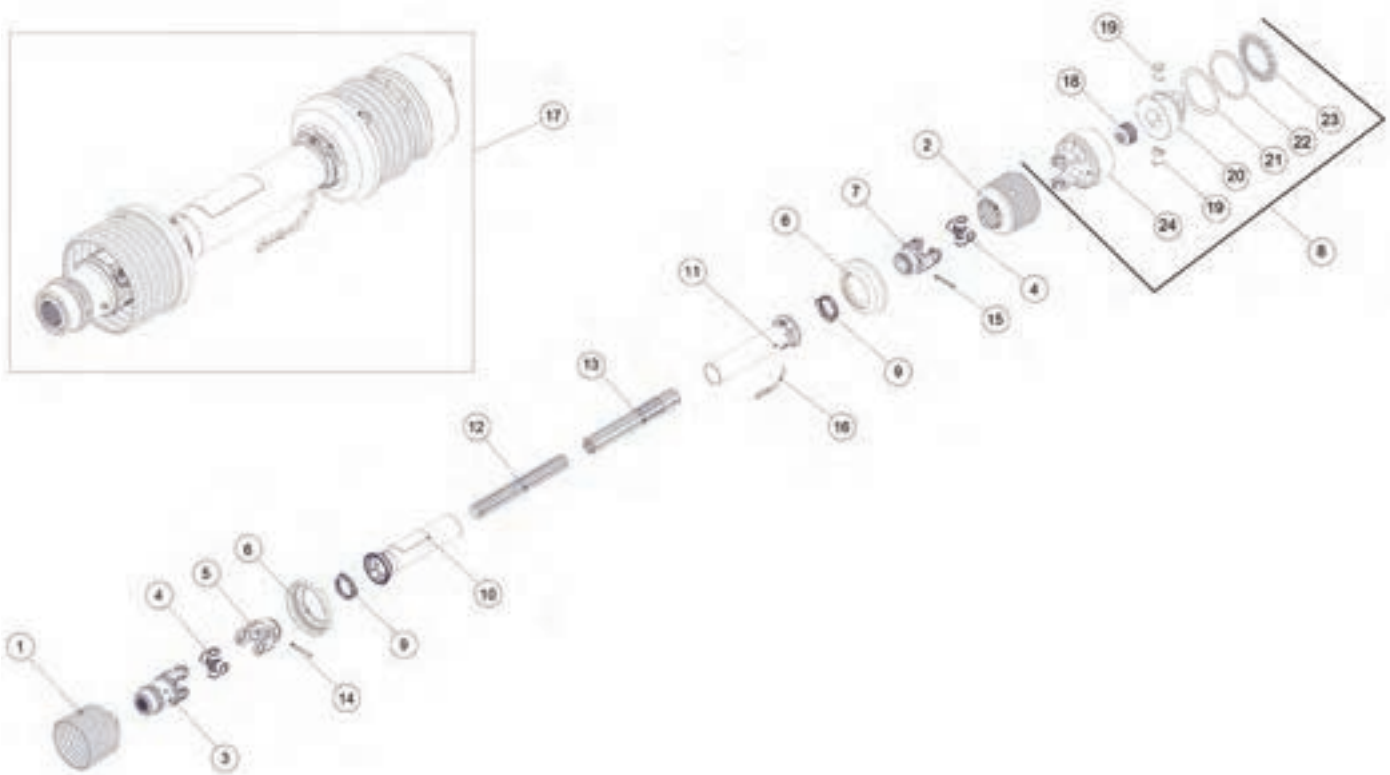




FIGURE 17 PTO & COMPONENTS

REF #	PART #	DESCRIPTION	QTY
1	92635	GUARD CONE	1
2	92445	GUARD CONE	1
3	92631	YOKE, OVERRUNNING CLUTCH	1
4	92630	U-JOINT	2
5	92632	YOKE	1
6	92446	REINFORCING COLLAR	2
7	92440	YOKE ASSEMBLY	1
8	92637	CLUTCH, TORQUE LIMITING	1
9	87919	BEARING RING	2
10	92634	OUTER GUARD	1
11	92638	GUARD TUBE, INNER	1
12	92633	INNER SHAFT	1
13	92636	OUTER TUBE	1
14	92442	SPRING PIN	1
15	87920	SPRING PIN	1
16	87916	RESTRAINT CHAIN	1
17	92639	COMPLETE PTO, 1 3/4 1000 RPM	1
18	96792	SPRING PACK, 2500NM	1
19	93233	CAM	2
20	96791	HUB	1
21	93234	WASHER	1
22	93235	RETAINING RING	1
23	93236	SEAL	1
24	93253	HOUSING	1





FIGURE 18
GEARBOX ASSEMBLY, BEATER

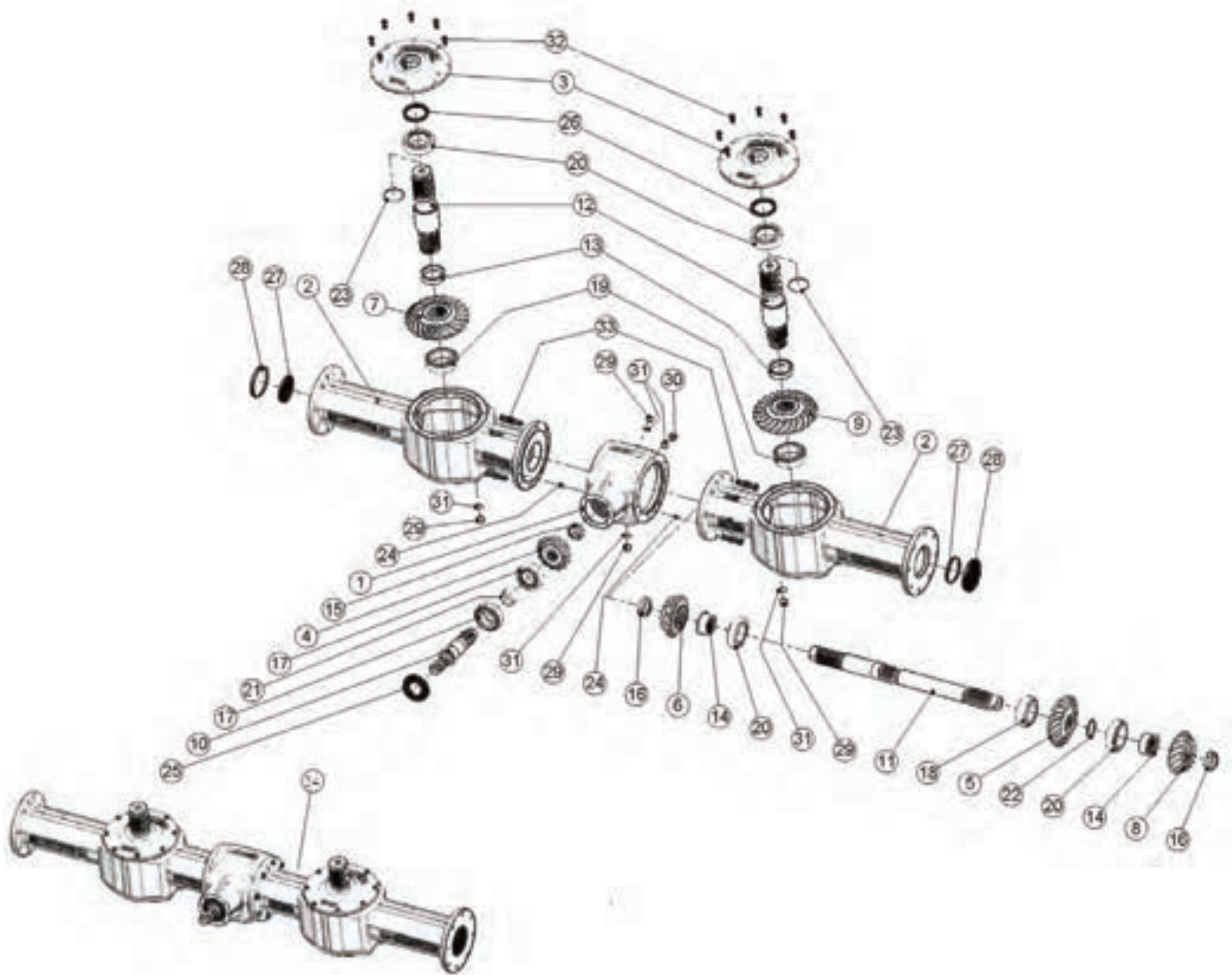




FIGURE 18

GEARBOX ASSEMBLY, BEATER

REF #	PART #	DESCRIPTION	QTY
1	95229	CENTER HOUSING	1
2	95230	OUTER HOUSING	2
3	95231	COVER	2
4	95232	SPIRAL GEAR, 13T	1
5	95233	SPIRAL GEAR, 20T	1
6	95234	SPIRAL GEAR, 15T	1
7	95235	SPIRAL GEAR, 23T	1
8	95236	SPIRAL GEAR, 15T	1
9	95237	SPIRAL GEAR, 23T	1
10	95238	INPUT SHAFT	1
11	95239	CROSS SHAFT	1
12	95240	OUTPUT SHAFT	2
13	95241	SPACER	2
14	95242	BEARING HUB	2
15	95243	NUT, M45 X 2	1
16	95244	NUT, M55 X 2	2
17	95245	TAPERED ROLLER BEARING	2
18	95246	TAPERED ROLLER BEARING	1
19	95247	TAPERED ROLLER BEARING	2
20	95248	TAPERED ROLLER BEARING	4
21	95249	RING	1
22	95250	SNAP RING	1
23	95251	STOP JOINT	2
24	95252	PIN	2
25	95254	SEAL	1
26	95255	SEAL	2
27	95256	END PLUG	2
28	95257	END PLUG	2
29	95258	FEMALE PLUG	4
30	95259	SIGHT GLASS	1
31	95260	FIBER GASKET	5
32	YBHH78015	BOLT HEX, M12-1.75 X 30 8.8 ZC	16
33	YBHH82045	BOLT HEX, M16-2 X 45 8.8 ZC	16
34	91306	GEARBOX ASSEMBLY, BEATER	1





FIGURE 19
GEARBOX ASSEMBLY, APRON

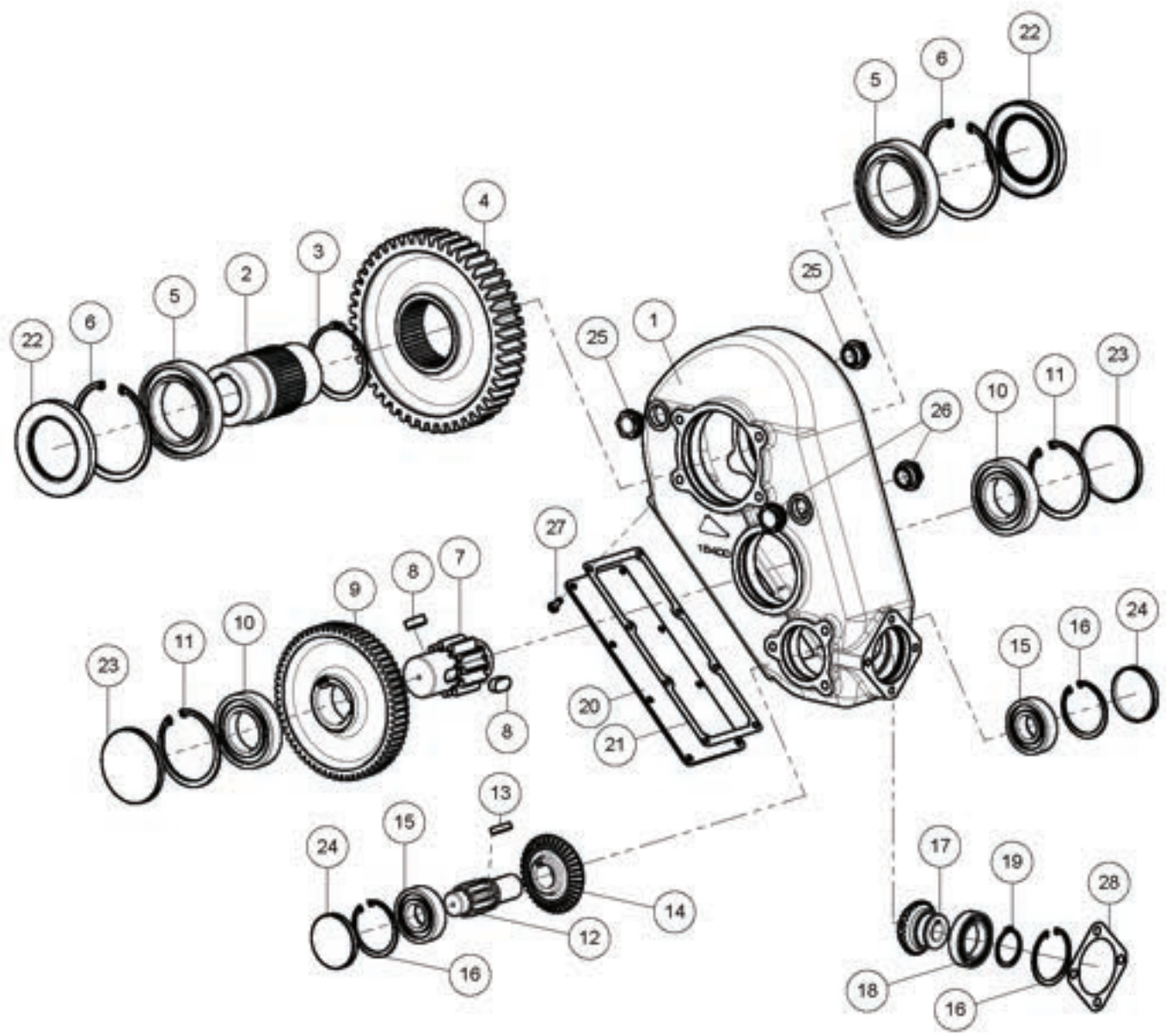


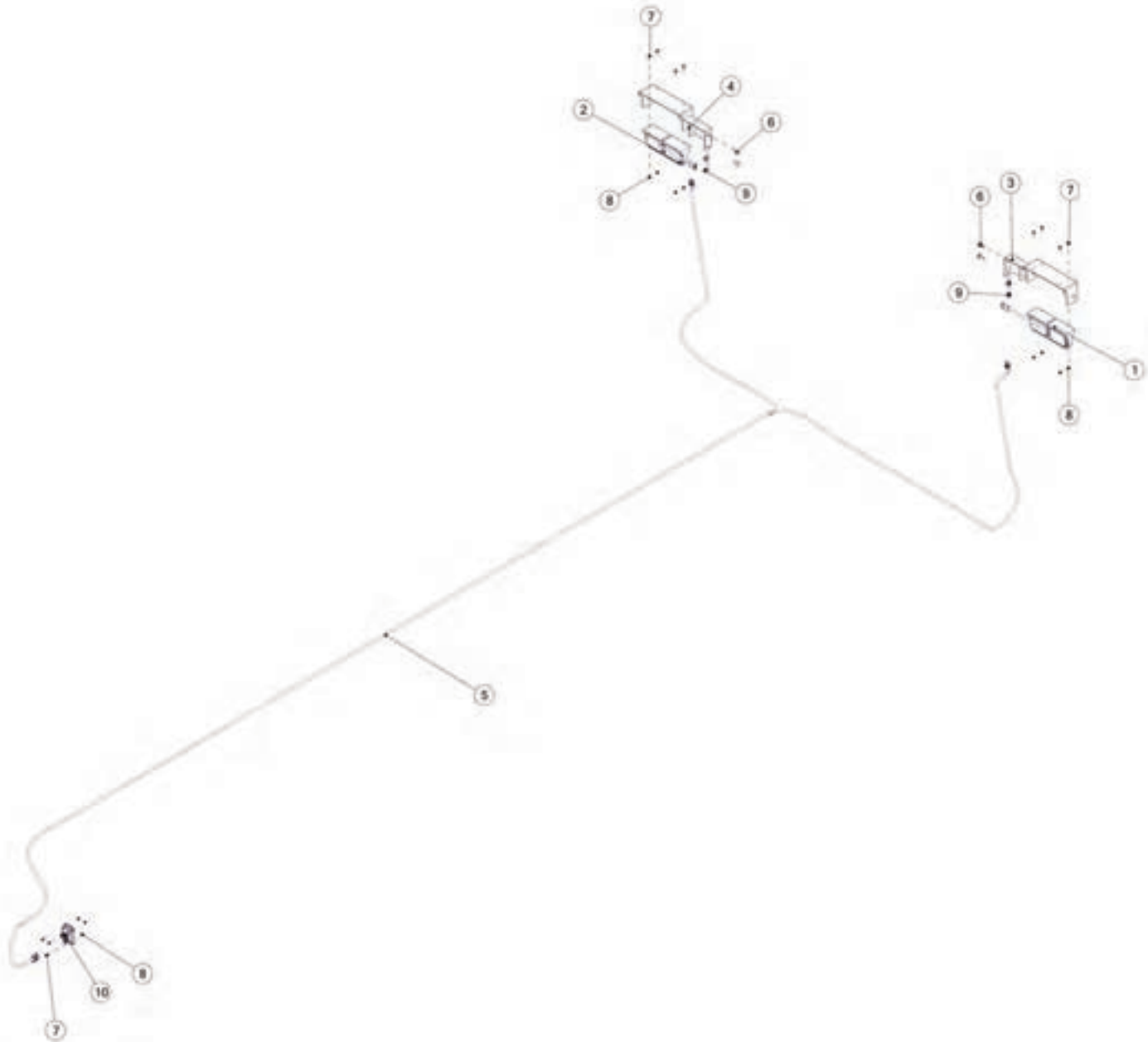


FIGURE 19

GEARBOX ASSEMBLY, APRON

REF #	PART #	DESCRIPTION	QTY
1	96566	GEARBOX HOUSING	1
2	96567	SLEEVE, SHAFT	1
3	96568	SNAP RING	1
4	96569	GEAR, CROWN	1
5	96570	BEARING	2
6	96571	SNAP RING	2
7	96572	GEAR, PINION	1
8	96573	SQ W/ROUND ENDS KEY, 18MM X 11MM	2
9	96574	GEAR, CROWN	1
10	96575	BEARING	2
11	96576	SNAP RING	2
12	96577	GEAR, SPUR	1
13	96578	SQ W/ROUND ENDS KEY, 10MM X 8MM	1
14	96579	GEAR, CROWN	1
15	96580	BEARING	2
16	86974	SNAP RING	3
17	96581	GEAR, PINION	1
18	86982	BALL BEARING	1
19	86983	SNAP RING	1
20	96582	COVER PLATE	1
21	96583	GASKET	1
22	96584	SEAL	2
23	96585	CAP	2
24	86987	PLUG	2
25	86984	BREATHER	2
26	86985	OIL LEVEL PLUG	2
27	86991	BOLT	8
28	96586	GASKET	1
*	82387	GEARBOX ASSEMBLY, APRON	1





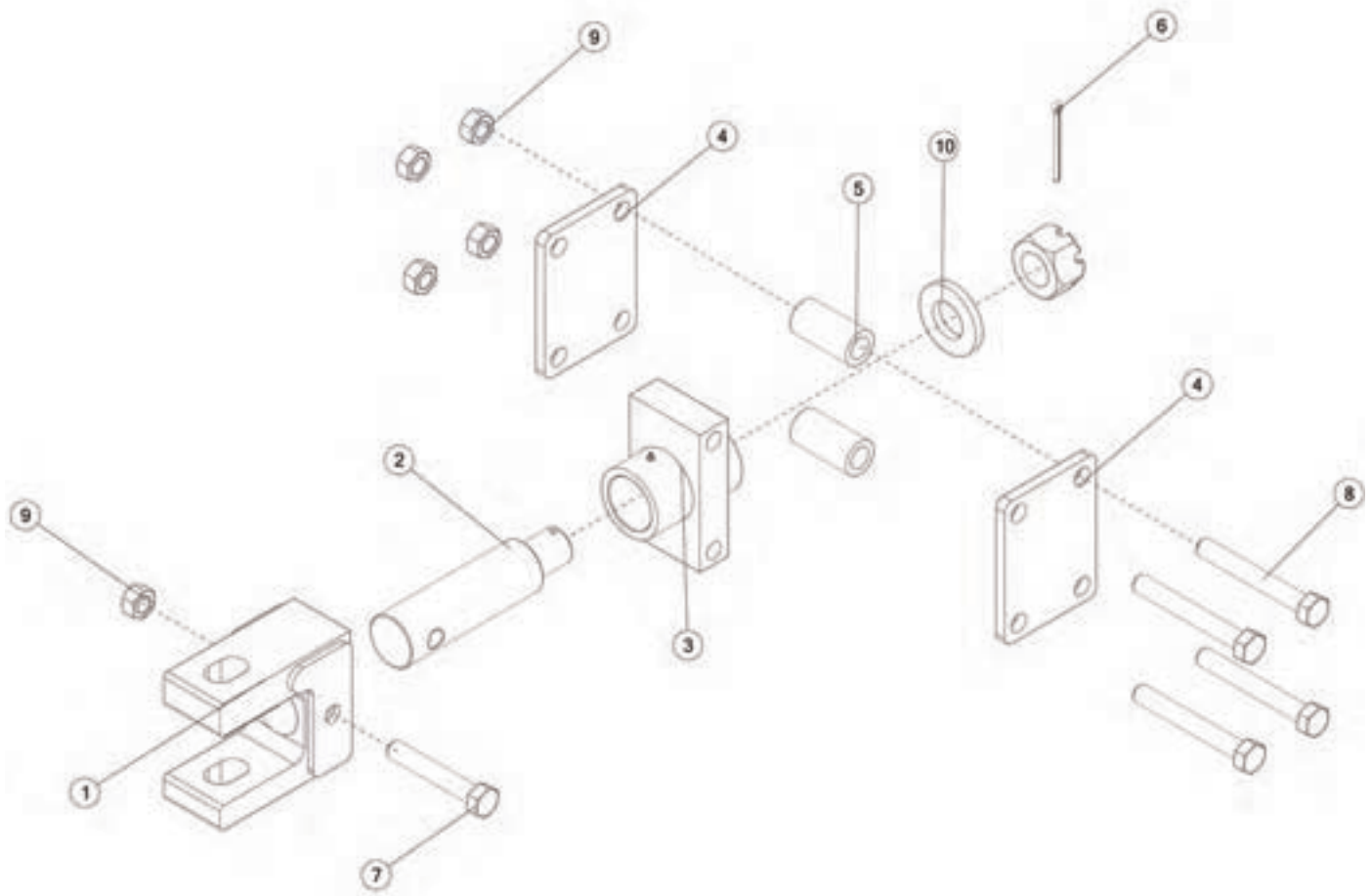
REF #	PART #	DESCRIPTION	QTY
1	TFM71	TAIL LIGHT, LH	1
2	TFM72	LED TAIL LIGHT ASSY, RH	1
3	91757	LIGHT BRACKET, LH	1
4	91758	LIGHT BRACKET, RH	1
5	92772	ELECTRIC HARNESS, LIGHTS	1
6	YBCR16015	BOLT CARRIAGE, 1/2-13 X 1-1/4 G5 ZC	4
7	YBFB08100	BOLT FLANGE, 1/4 X 1 G5	11
8	YNFG08010	NUT FLANGE, 1/4 GF	11
9	YNFG16003	NUT FLANGE, 1/2 GF	4
10	69908	MODULE, CONTROL, BLINKER	1
*	57319	BRAKE HARNESS	1



FIGURE 21

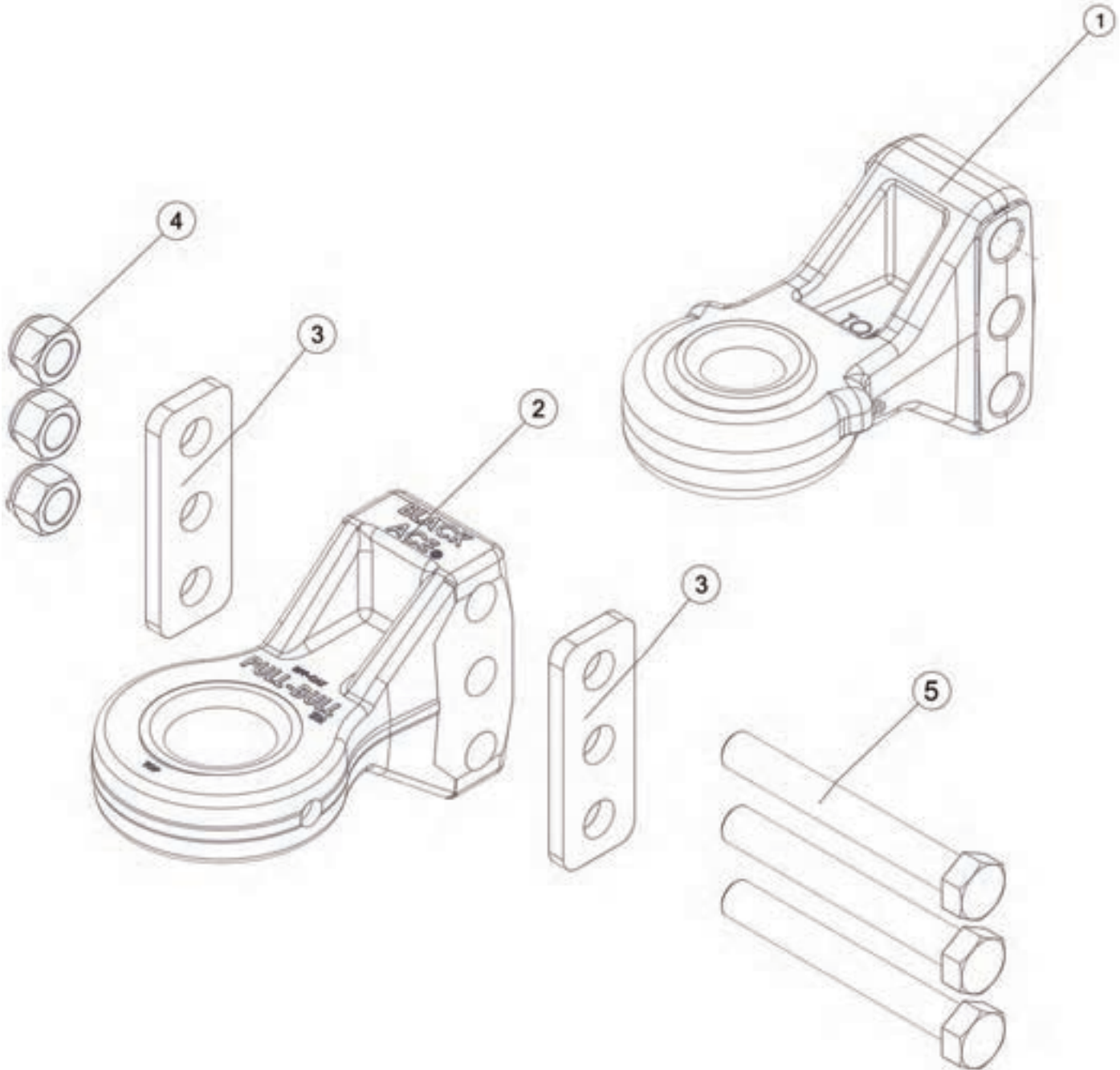
OPTIONAL CHOSCH

SWIVEL DOUBLE CLEVIS HITCH

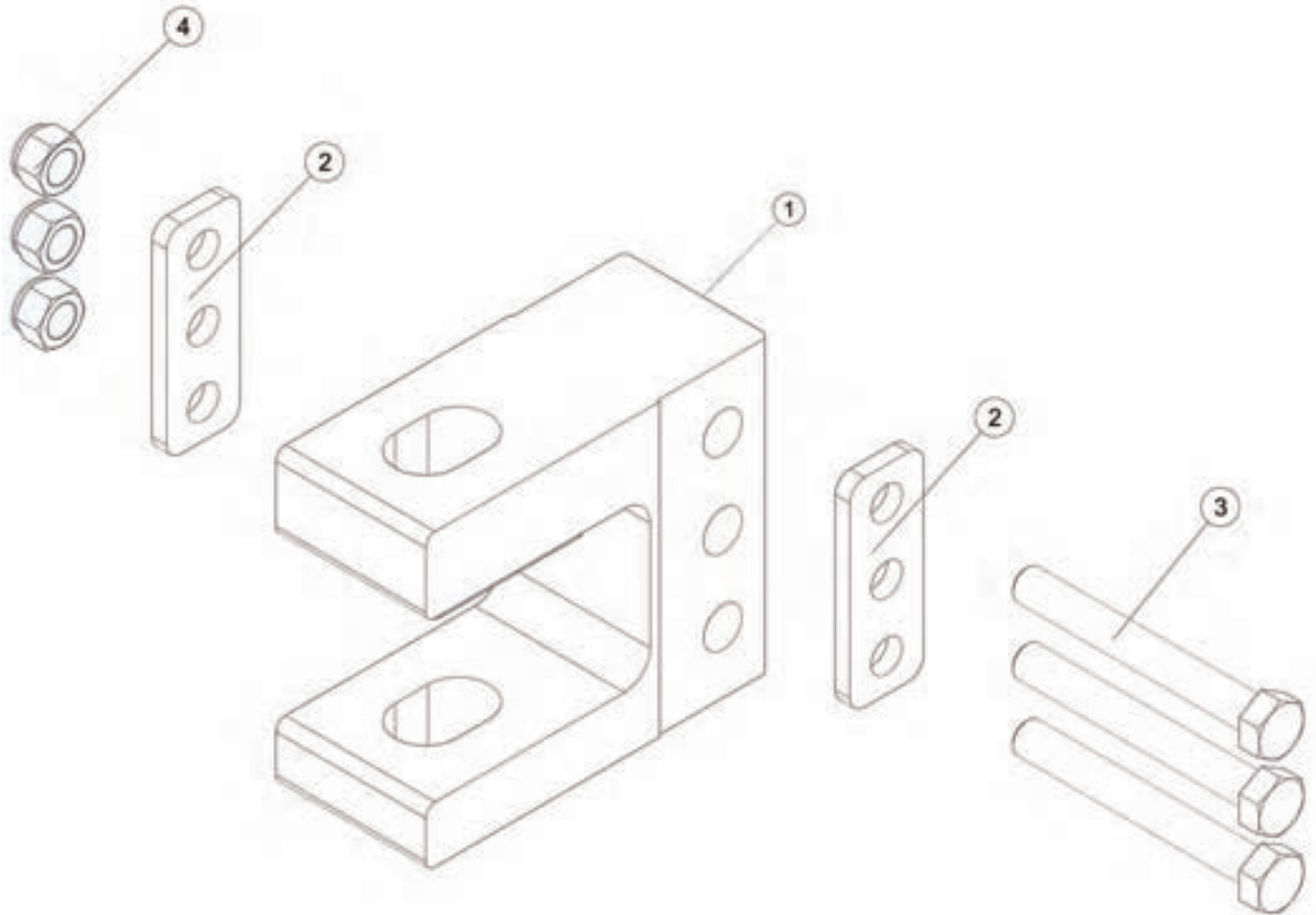


REF #	PART #	DESCRIPTION	QTY
1	91293	CLEVIS HITCH, DOUBLE	1
2	91303	SWIVEL HITCH SHAFT	1
3	88691	HITCH PIVOT	1
4	91291	HITCH PLATE	2
5	91294	HITCH CRUSH SLEEVE	1
6	YPCT10020	COTTER PIN, 5/16 X 4	1
7	YBHH32026	BOLT HEX, 1-8 X 6 G8 YELLOW ZC	1
8	YBHH32034	BOLT HEX, 1-8 X 7-1/2 G8	4
9	YNL32005	NUT HEX, 1-8, LKTL C ZC	5
10	88697	WASHER, SWIVEL NUT	1





REF #	PART #	DESCRIPTION	QTY
1	80988	BULLNOSE HITCH CAT 4	1
2	92719	BULLNOSE HITCH CAT 5	1
3	91629	HITCH SPACER	2
4	YNNY32005	NUT HEX, 1-8 LKNY G2 ZC	3
5	YBHH32036	BOLT HEX, 1 X 8 G5	3



REF #	PART #	DESCRIPTION	QTY
1	HTCHC	CLEVIS HITCH	1
2	91629	HITCH SPACER	2
3	YBHH32036	BOLT HEX, 1 X 8 G5	3
4	YNNY32005	NUT HEX, 1-8 LKNY G2 ZC	3



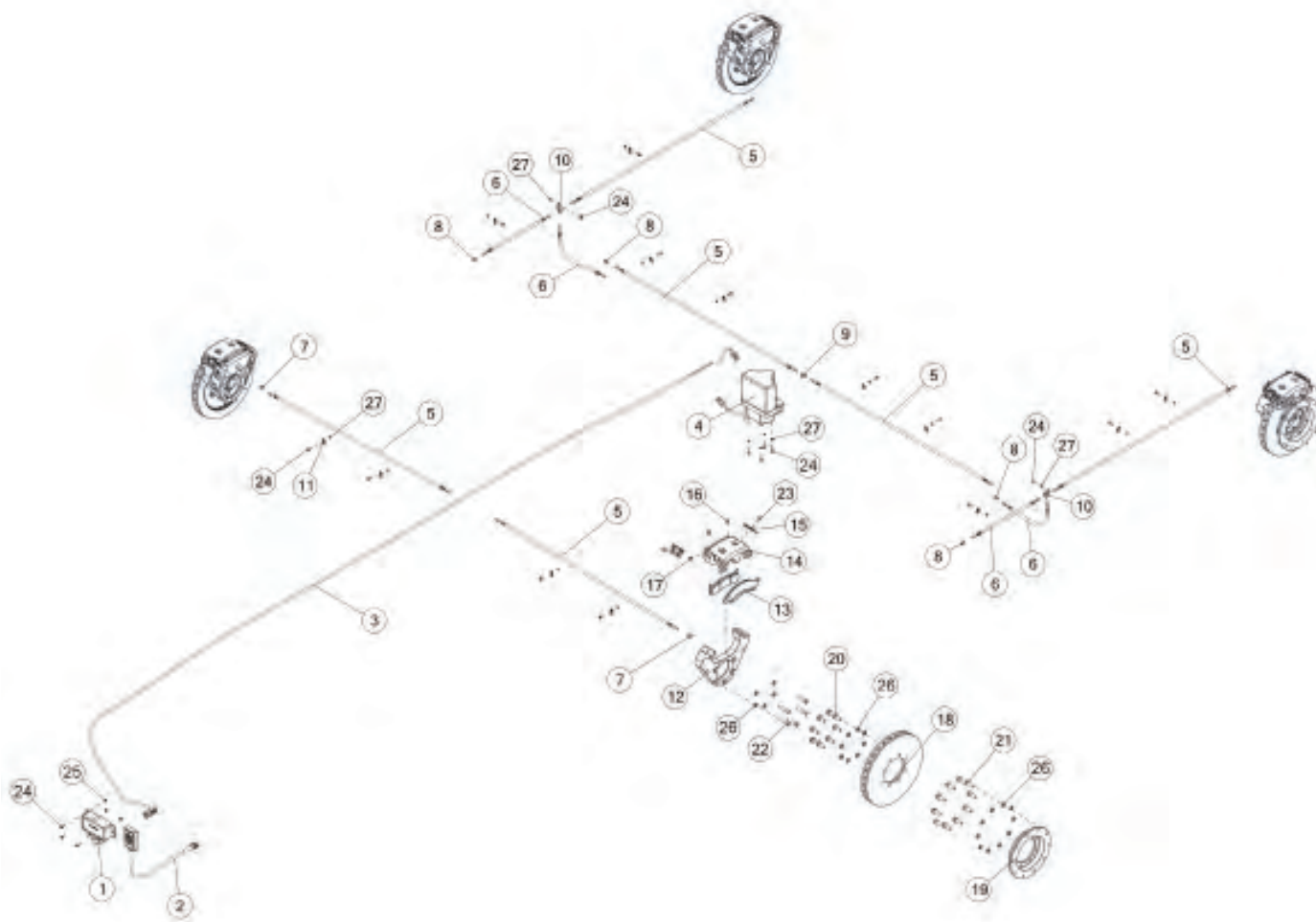




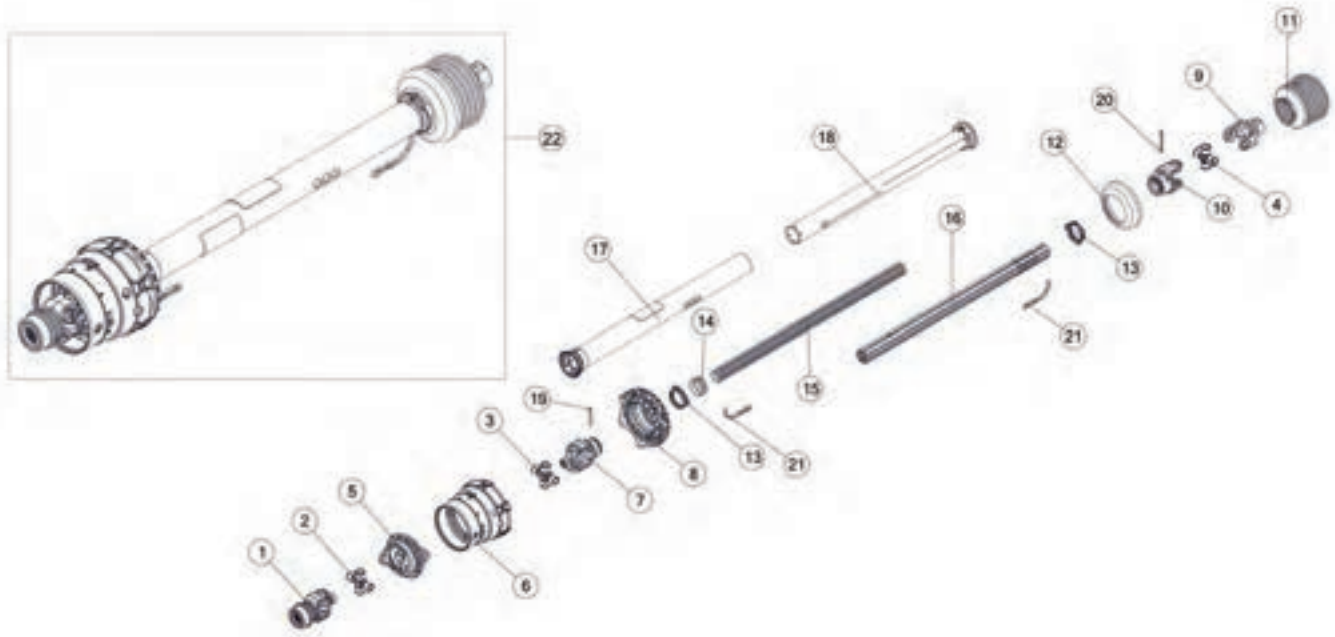
FIGURE 24

OPTIONAL PSO4WBRK

4 WHEEL BRAKE PACKAGE

REF #	PART #	DESCRIPTION	QTY
1	FBC39	BRAKE CONTROL MODULE	1
2	FBC38	BRAKE CONTROL	1
3	FBC40	ELECTRIC, HARNESS, PUMP HARNESS	1
4	FBC41	PUMP/MASTER CYLINDER	1
5	92467	BRAKE HOSE, 48	6
6	FBC46	BRAKE HOSE, 18	4
7	57180	ADAPTER PORT 90 DEG. 1/8 NPT TO 3/16 FIF	2
8	57338	FITTING, STRAIGHT, 3/16FIF, 3/16FIF	4
9	FBC45	FITTING, TEE, 3/16FIF, 3/16FIF, 02NPT	1
10	RGB26	BRAKE LINE TEE	2
11	87705	CUSHION WIRE CLAMP, 3/8	13
12	57000	CALIPER BRACKET	4
13	56961	BRAKE PAD SET	4
14	56733	DUAL PISTON CALIPER W/PADS & CLIPS, 2-1/2	4
15	56963	CALIPER RETAINING CLIP	8
16	57179	BRASS BLEED PORT	8
17	57178	BRASS PLUG, 1/8 NPT	4
18	56734	ROTOR, 15	4
19	56953	ROTOR SPACER	4
20	YBFB16125	BOLT FLANGE, 1/2 X 1-1/4 G5	32
21	YBHH16107	BOLT HEX, 1/2-20 X 1-1/2 G5 ZC	40
22	YSHS16015	BOLT SOCKET, 1/2-13 X2 BO	20
23	YBHH12135	BOLT HEX, 3/8-16 X 3/4 G5	8
24	YBFB08075	BOLT FLANGE, 1/4 X 3/4 G5	24
25	YNFG08010	NUT FLANGE, 1/4	4
26	YWLO16005	WASHER, LOCK, 1/2	92
27	YWLO08005	WASHER, LOCK, 1/4 ZC	20

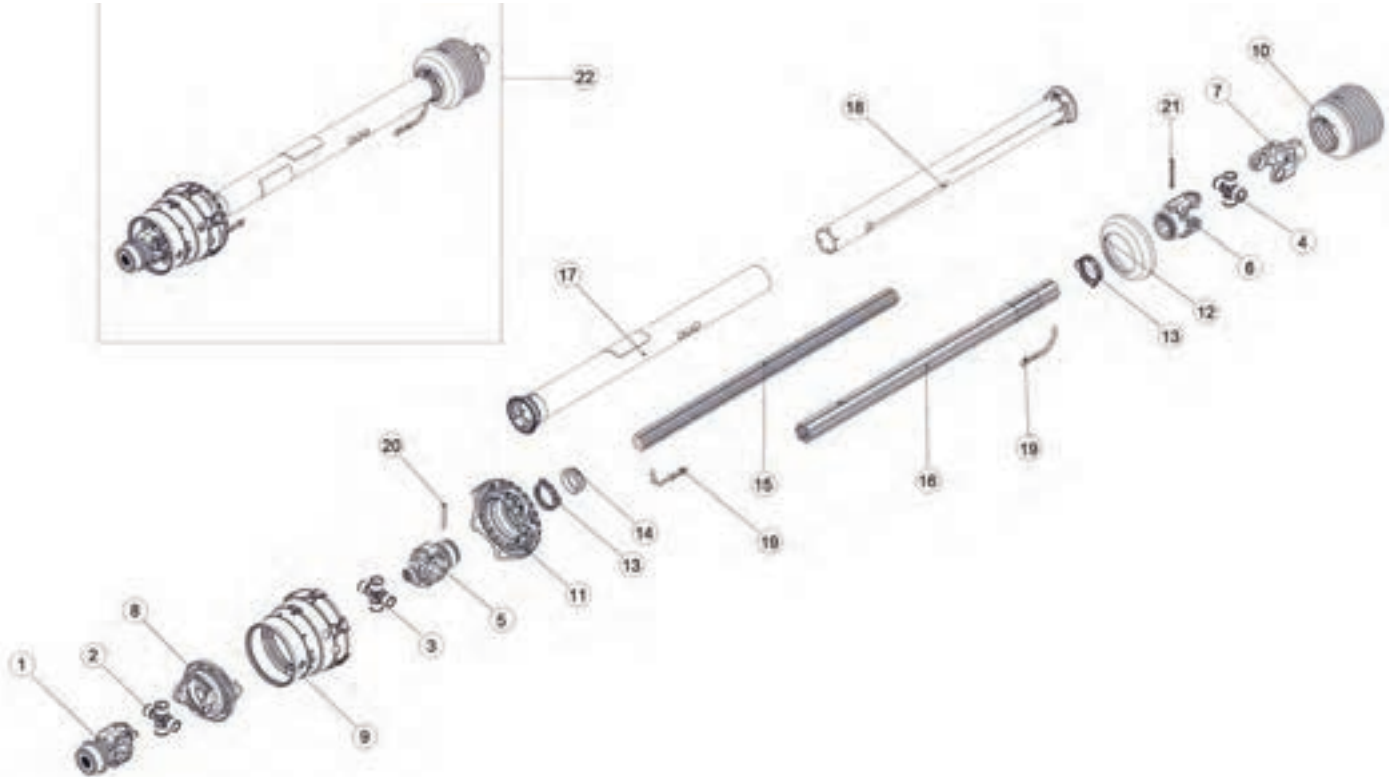




REF #	PART #	DESCRIPTION	QTY
1	92430	YOKE ASSEMBLY	1
2	92428	U-JOINT	1
3	92432	U-JOINT	1
4	92439	U-JOINT	1
5	92641	YOKE, DOUBLE	1
6	92436	CV GUARD	1
7	92433	YOKE ASSEMBLY	1
8	89776	NET GUARD	1
9	92438	YOKE ASSEMBLY	1
10	92440	YOKE ASSEMBLY	1
11	92445	GUARD CONE	1
12	92446	REINFORCING COLLAR	1
13	87919	BEARING RING	2
14	92444	BEARING, SUPPORT	1
15	92434	INNER SHAFT	1
16	92441	OUTER SHAFT	1
17	92435	GUARD TUBE, OUTER	1
18	92443	GUARD TUBE, INNER	1
19	89773	SPRING PIN	1
20	92442	SPRING PIN	1
21	87916	RESTRAINT CHAIN	2
22	92447	COMPLETE PTO, 1-3/4 1000 RPM	1



FIGURE 26
OPTIONAL PSO1038CVP
1-3/8" 1000 RPM CV PTO



REF #	PART #	DESCRIPTION	QTY
1	92452	YOKE ASSEMBLY	1
2	92428	U JOINT	1
3	92432	U JOINT	1
4	92439	U JOINT	1
5	92433	YOKE ASSEMBLY	1
6	92440	YOKE ASSEMBLY	1
7	92438	YOKE ASSEMBLY	1
8	92641	YOKE, DOUBLE	1
9	92436	CV GUARD	1
10	92445	GUARD CONE	1
11	89776	NET GUARD	1
12	92446	REINFORCING COLLAR	1
13	87919	BEARING RING	2
14	92444	BEARING, SUPPORT	1
15	92434	INNER SHAFT	1
16	92441	OUTER SHAFT	1
17	92435	GUARD TUBE, OUTER	1
18	92443	GUARD TUBE, INNER	1
19	87916	RESTRAINT CHAIN	2
20	89773	SPRING PIN	1
21	92442	SPRING PIN	1
22	92453	COMPLETE PTO, 1-3/8 1000 RPM	1



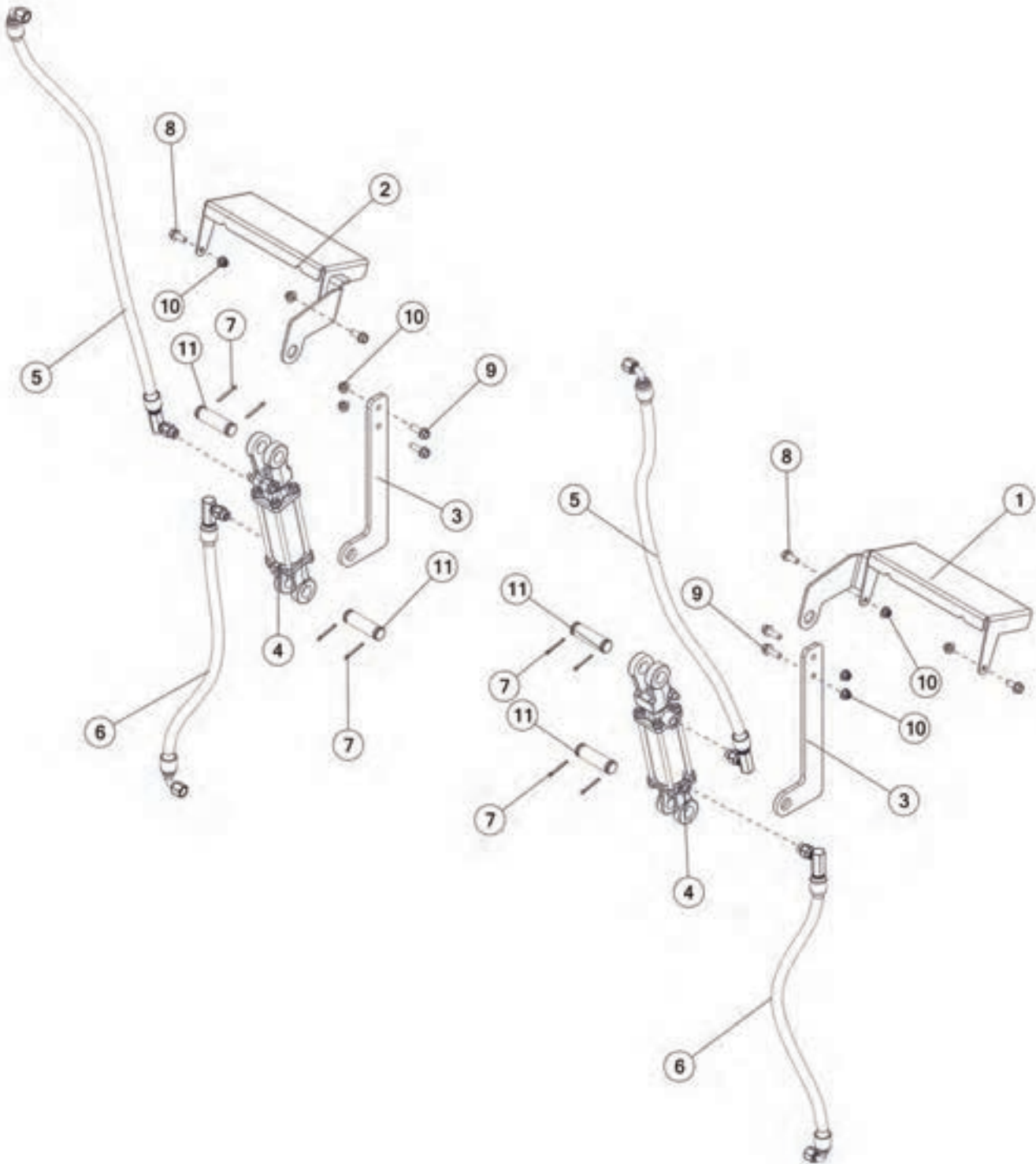




FIGURE 28

OPTIONAL PSOHALC
HYDRAULIC ACTUATOR LIGHT COVERS

REF #	PART #	DESCRIPTION	QTY
1	92810	LIGHT COVER, LH	1
2	92820	LIGHT COVER, RH	1
3	91766	CYLINDER MOUNT	2
4	70797	HYDRAULIC CYLINDER, 2 X 4	2
5	92831	HYDRAULIC HOSE, 8, 52	2
6	92826	HYDRAULIC HOSE, 8, 30	2
7	YPCT05010	COTTER PIN, 5/32 X 1-1/2	8
8	YBFB12003	BOLT FLANGE, 3/8 X 1 G5	4
9	YBFB12125	BOLT FLANGE, 3/8 X 1-1/4 G5	4
10	YNFG12006	NUT FLANGE, 3/8 GF	8
11	T143	PIN	4





FIGURE 29

OPTIONAL PSORVP REVERSER VALVE PACKAGE

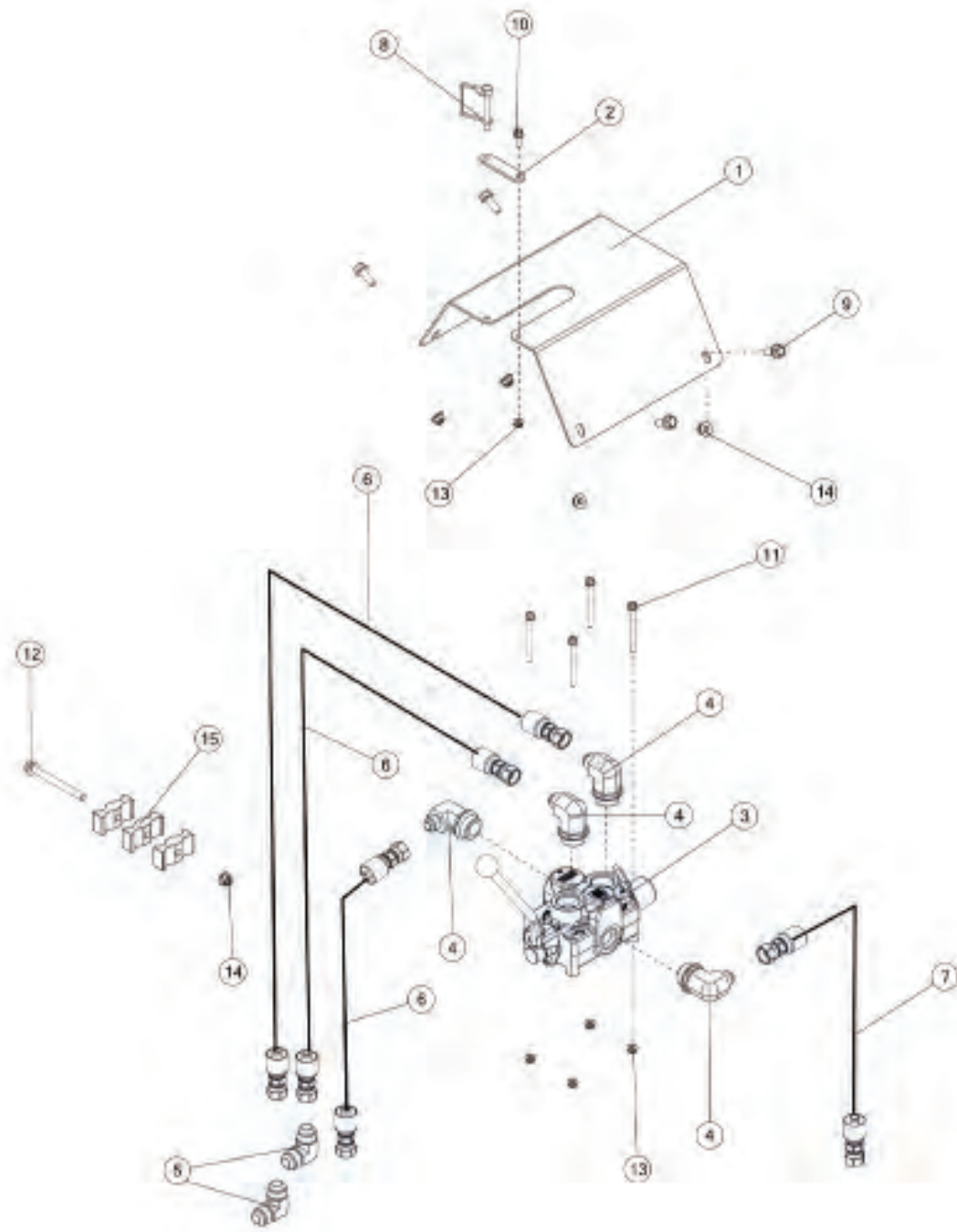




FIGURE 30
OPTIONAL PSOS800
5-POINT SCALE

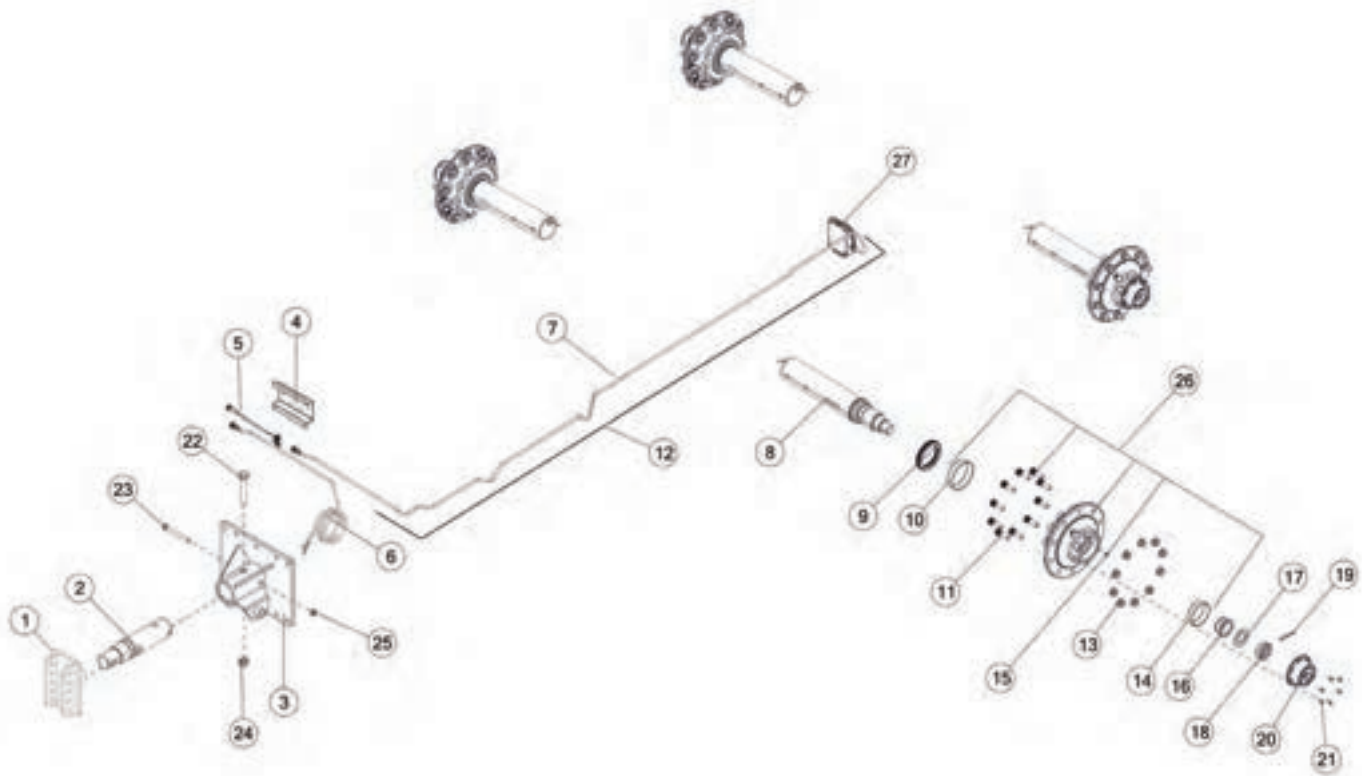




FIGURE 30

OPTIONAL PSOS800

5-POINT SCALE

REF #	PART #	DESCRIPTION	QTY
1	95941	HITCH MOUNT	1
2	TS336	LOAD CELL, HITCH	1
3	95937	HITCH MOUNT	1
4	GM408	SCALE HANGER BRACKET	1
5	TS338	ELECTRIC HARNESS, JUNCTION BOX	1
6	TS385	CABLE POWER, 10FT-4 WIRE	1
7	GM406	JUNCTION BOX CORD	1
8	TS335	LOAD CELL, SPINDLE	4
9	90298	OIL BATH SEAL	4
10	TS389	INNER RACE	4
11	YBSD24010	BOLT STUD, 3/4 X 2-3/4 G8	40
12	TS83	JUNCTION BOX KIT	1
13	BFR618	NUT FLANGE, 3/4-16 NF	40
14	TS390	OUTER RACE	4
15	BFR28	GREASE ZERK, 1/8 NPT	4
16	TS391	OUTER BEARING	4
17	90290	WASHER	4
18	YNSL44005	NUT SLOT, 2-12 NA G2 NF	4
19	YPEX12350	EXPANSION PIN, 5/16 X 3	4
20	90291	OIL BATH CAP	4
21	YBHH10105	BOLT HEX, 5/16 X 3/4 G5	24
22	YBHH32026	BOLT HEX, 1-8 X 6 G8 YELLOW ZC	2
23	YBHH20101	BOLT HEX, 5/8-11 X 6 G8 YELLOW ZC	1
24	YNRL32005	NUT HEX, 1-8 LKRS A ZC	2
25	YNRL20005	NUT HEX, 5/8-11 LKRS A ZC	1
26	90288	HUB SUB ASSEMBLY	4
27	95414	JUNCTION BOX	1





FIGURE 31
OPTIONAL PSOVSEC - ELECTRIC ADJUST
HYD VARIABLE SPEED APRON CONTROL

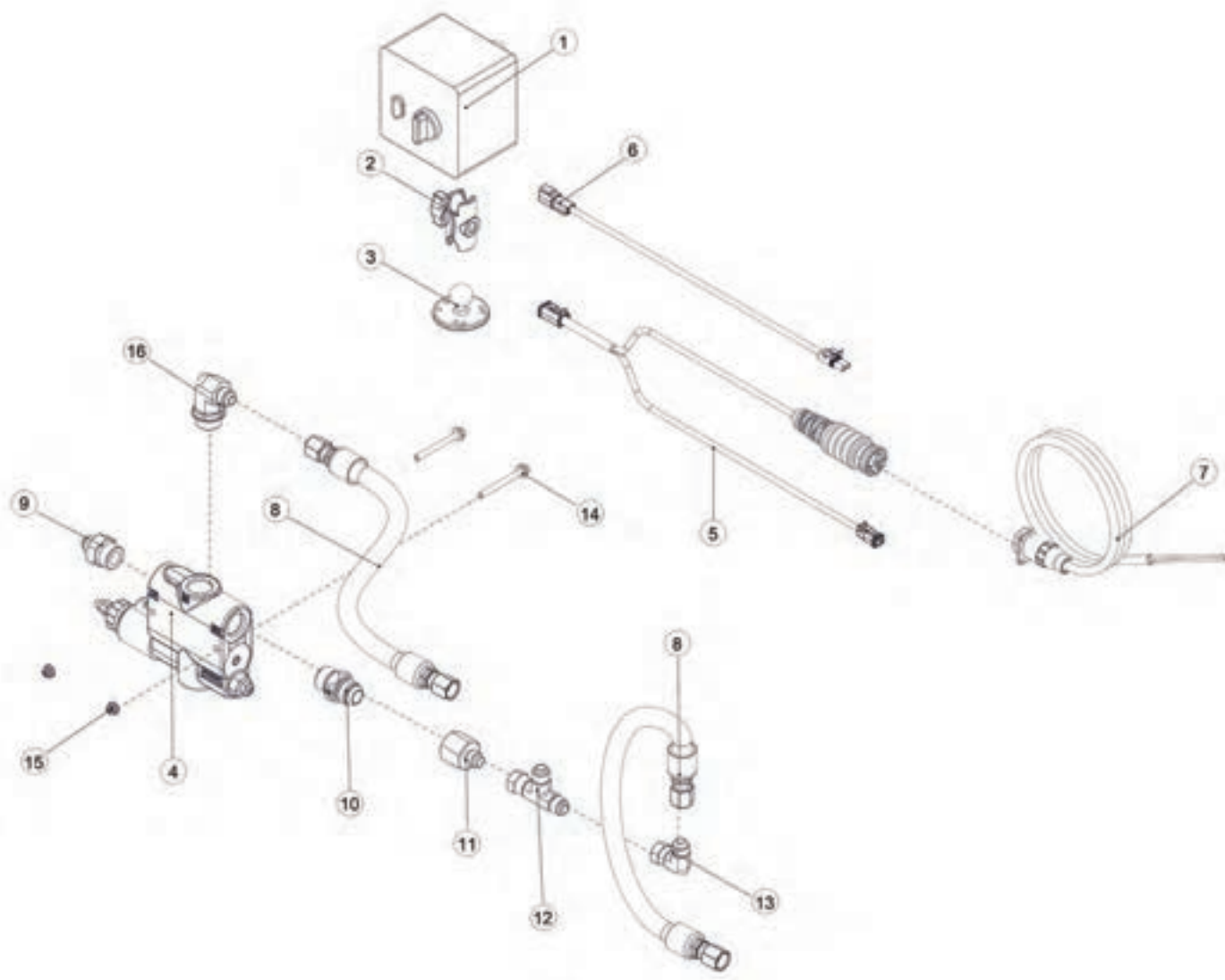




FIGURE 31
OPTIONAL PSOVSEC - ELECTRIC ADJUST
HYD VARIABLE SPEED APRON CONTROL

REF #	PART #	DESCRIPTION	QTY
1	91719	CONTROL BOX	1
2	85272	RAM DOUBLE SOCKET SHORT ARM	1
3	71445	MOUNT, RAM, CTRL MODULE	1
4	89668	ELECTRIC FLOW CONTROL	1
5	91713	CAB HARNESS	1
6	91712	IMPLEMENT HARNESS	1
7	16SV269	TRACTOR CONTROL CABLE	1
8	92790	HYDRAULIC HOSE, 8, 22	2
9	SD315	FITTING, STRAIGHT, 8JIC, 12ORB, STL	1
10	92787	FITTING, STRAIGHT, 12ORB, 12JIC, CHECK	1
11	92788	FITTING, STRAIGHT, 12JIC, 8JIC	1
12	63336	FITTING, TEE, 8JIC, 8JIC, 8JIC	1
13	TFM83	ELBOW, 90 DEGREE	1
14	YBFB08250	BOLT FLANGE, 1/4 X 2-1/2 G5	2
15	YNFG08010	NUT FLANGE, 1/4 GF	2
16	TFM87	FITTING, 90, 8JIC, 12ORB	1

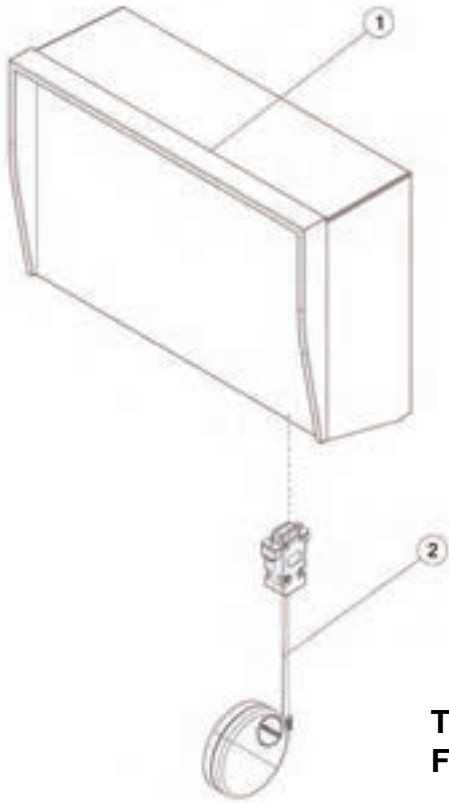




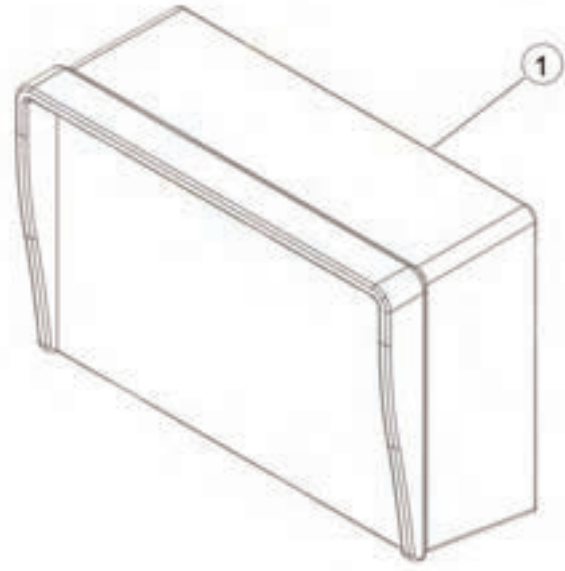
FIGURE 32

OPTIONAL SCALE DISPLAYS

TSOGP - SCALE DISPLAY WITH GPS
FACTORY INSTALLED W/SCALE SYSTEM



OPTIONAL TSOW - SCALE DISPLAY
FACTORY INSTALLED W/SCALE SYSTEM



TSOALOG - KIT-NT560 AUTOLOG
FACTORY INSTALLED W/ SCALE SYSTEM

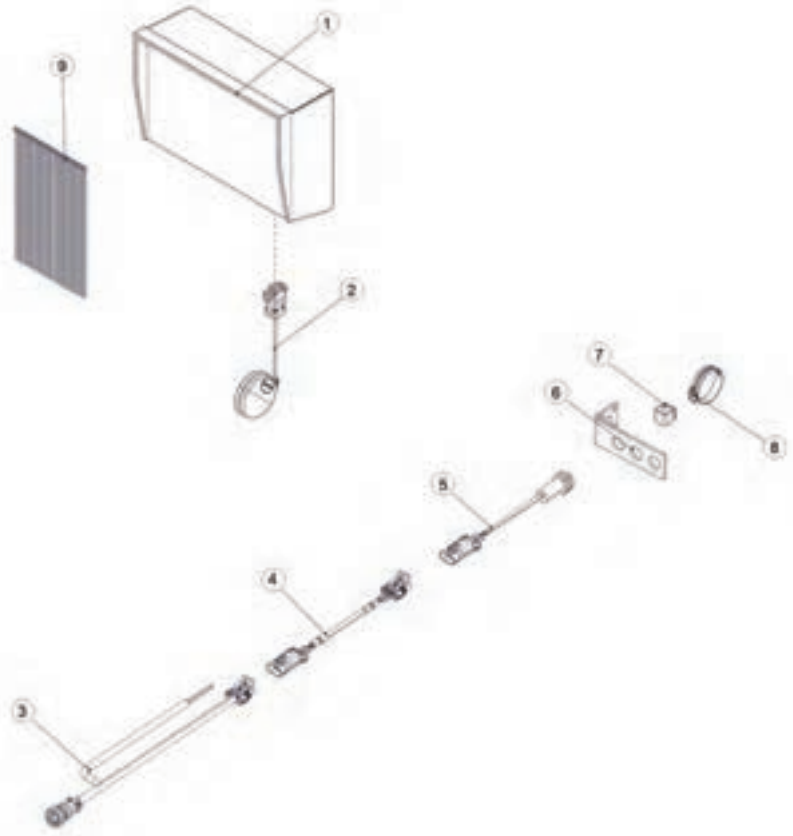




FIGURE 32

OPTIONAL SCALE DISPLAYS

**OPTIONAL TSOGP
SCALE DISPLAY WITH GPS / FACTORY INSTALLED W/SCALE SYSTEM**

REF #	PART #	DESCRIPTION	QTY
1	95420	SCALE DISPLAY	1
2	58674	GPS MODULE	1

**OPTIONAL TSOW
SCALE DISPLAY / FACTORY INSTALLED W/SCALE SYSTEM**

REF #	PART #	DESCRIPTION	QTY
1	TS339	SCALE DISPLAY	1

**OPTIONAL TSOALOG
KIT-NT560 AUTOLOG / FACTORY INSTALLED W/ SCALE SYSTEM**

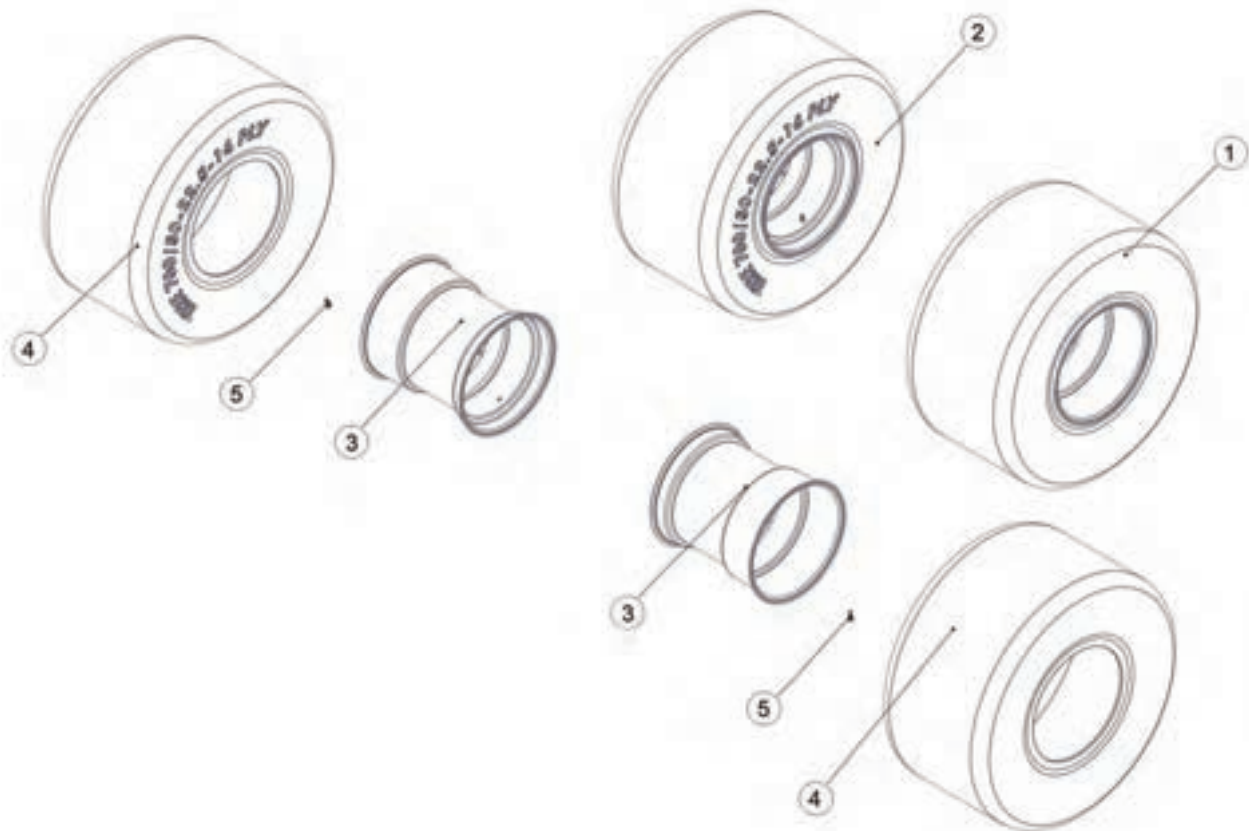
REF #	PART #	DESCRIPTION	QTY
1	95420	SCALE DISPLAY	1
2	58674	GPS MODULE	1
3	95428	CABLE-RPM SENSOR/TRACTOR/ALM Y	1
4	58667	ELECTRIC HARNESS, SENSOR EXTENSION	1
5	58666	ELECTRIC HARNESS, RPM SENSOR	1
6	58671	BRACKET, RPM SENSOR	1
7	58669	TARGET, RPM SENSOR	1
8	58670	HOSE CLAMP, 1/2 X 2 #24	1
9	CIZT115	ZIP TIE, 8 X .14 X .03	20
*	95429	MANUAL	1





FIGURE 33

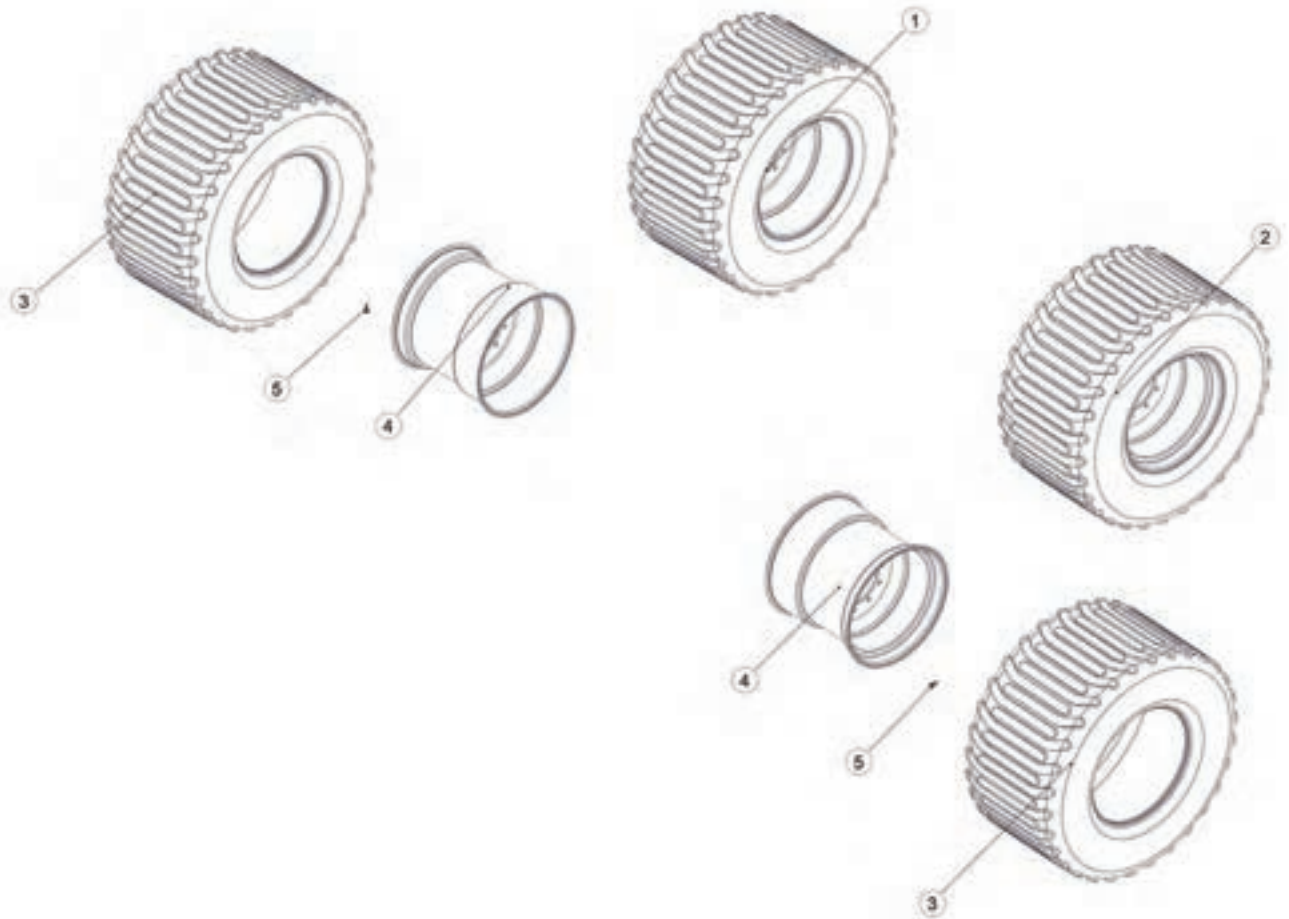
OPTIONAL TWP700S
(4) 700/50 X 22.5 FLOTATION TIRES/RIMS



REF #	PART #	DESCRIPTION	QTY
1	33492SR	ASSEMBLY, TIRE/WHEEL, LH	2
2	85254SR	ASSEMBLY. TIRE/WHEEL, RH	2
3	TS262SR	WHEEL, 22.5 x 24.0, 10 BOLT, 0 OFFSET, SILVER	4
4	TS264	TIRE, 700/50-22.5-16 PLY	4
5	72437	VALVE STEM, 1.25 HD	4



FIGURE 34
OPTIONAL TWP70026S
(4) 700/50 X 26.5 FLOTATION TIRES/RIMS



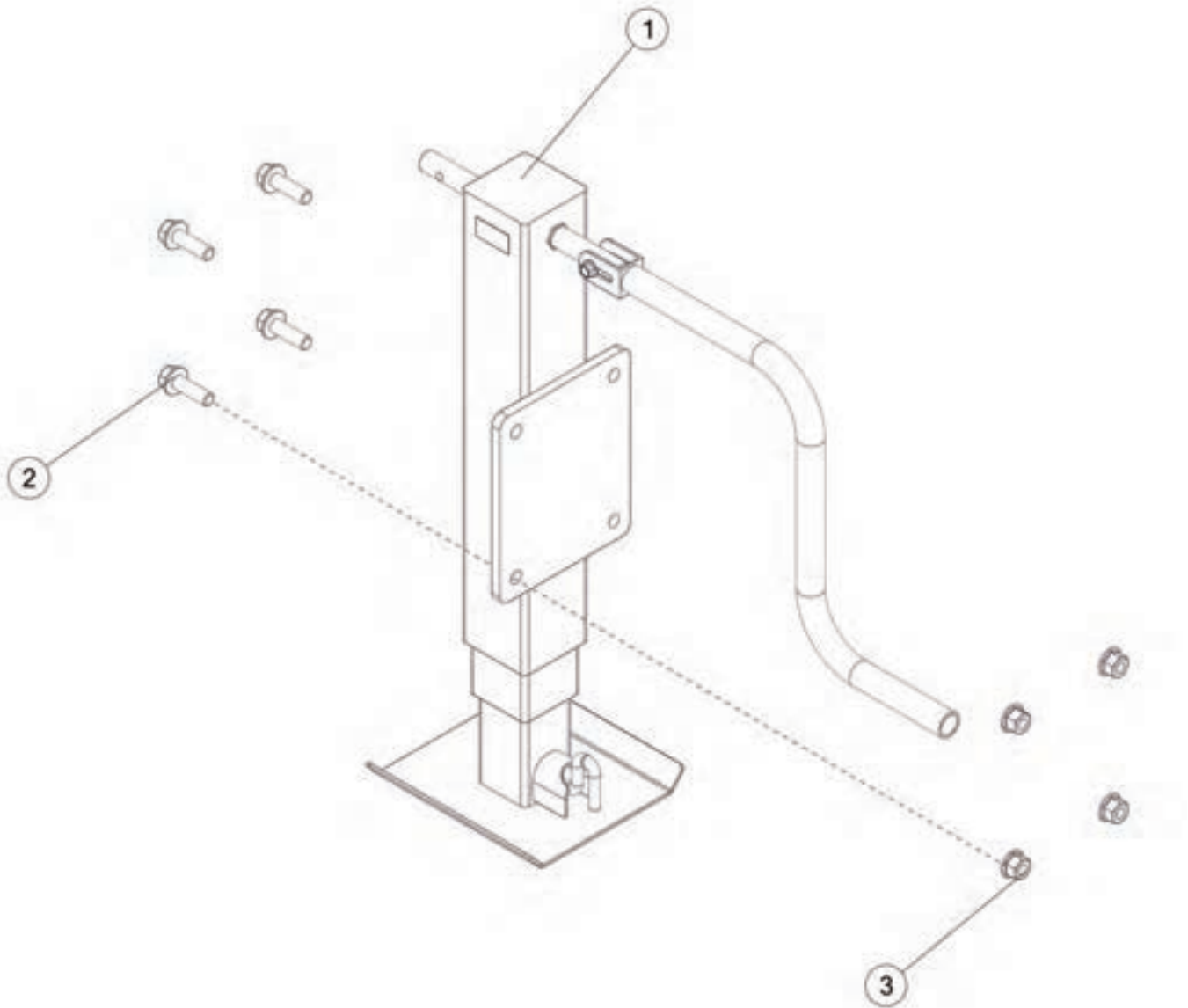
REF #	PART #	DESCRIPTION	QTY
1	93980	ASSEMBLY, TIRE AND WHEEL, LH	2
2	93981	ASSEMBLY, TIRE AND WHEEL, RH	2
3	92686	TIRE, 700/50-26.5 16-PLY	4
4	92685	WHEEL 26.5 x 24, 10 BOLT SILVER	4
5	72437	VALVE STEM, 1.25 HD	4





FIGURE 35

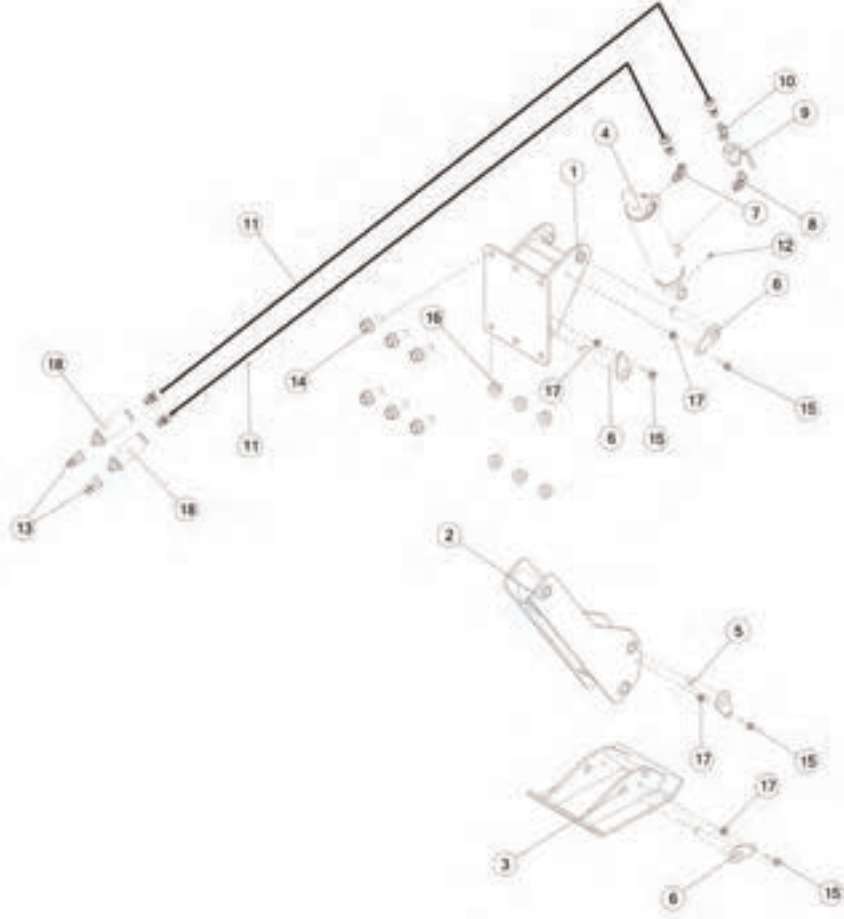
OPTIONAL PSOCJACK CRANK JACK



REF #	PART #	DESCRIPTION	QTY
1	95030	SIDE WIND JACK	1
2	YBFB20200	BOLT FLANGE, 5/8 X 2 G5	4
3	YNFG20005	NUT FLANGE, 5/8-11 LKTL F ZC	4



FIGURE 36
OPTIONAL PSOHJACK
HYDRAULIC JACK



REF #	PART #	DESCRIPTION	QTY
1	92454	JACK BASE	1
2	92450	JACK ARM	1
3	92456	JACK FOOT	1
4	92420	CYLINDER, 3 X 6	1
*	94015	SEAL KIT	1
5	92610	JACK PIN SHORT	1
6	92609	JACK PIN	3
7	70158	FITTING, 90, 3/4ORB, 3/8NPT, STL	1
8	CHM206	FITTING, 90, 6JIC, 8ORB	1
9	59235	BALL VALVE, 3/8 HIGH PRESSURE	1
10	58151	FITTING, 6-6 VTX-S	1
11	92687	HYDRAULIC HOSE, 6, 120	2
12	G89	STRAIGHT ZERK, 1/4-28	1
13	67148	FITTING, STRAIGHT, 8ORB, QUICK COUPLER TIP	2
14	YBFB24200	BOLT FLANGE, 3/4 X 2 G5	6
15	YBFB12125	BOLT FLANGE, 3/8 X 1-1/4 G5	4
16	YNFG24006	NUT FLANGE, 3/4-10 LKTL G ZC	6
17	YNFG12006	NUT FLANGE, 3/8 GF	4
18	94025	HOSE GRIPS, GRAY	2







Manufactured By:

H&S MANUFACTURING CO., INC.

2608 S. HUME AVE. MARSHFIELD, WI 54449
(715) 387-3414 | hsmfgco.com

