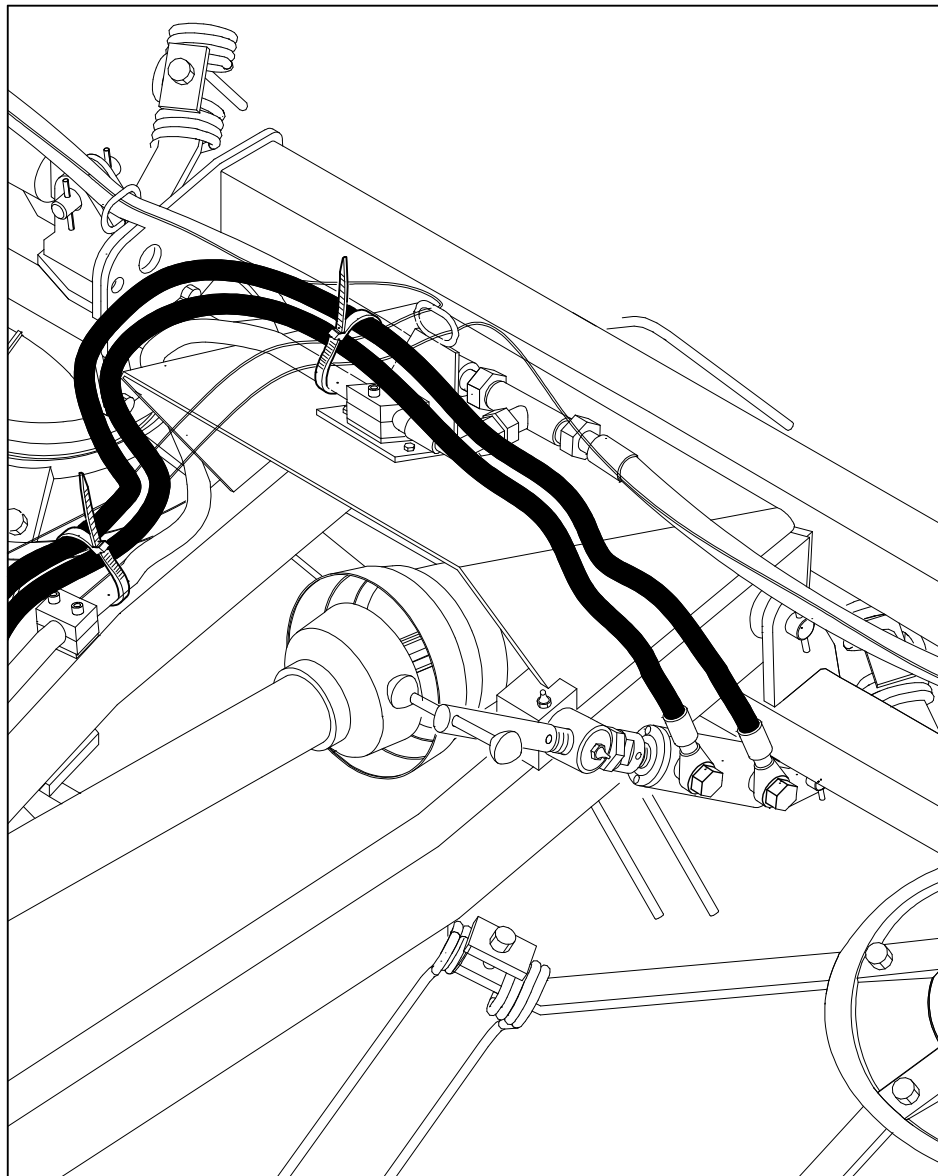


AGRICULTURAL MACHINERY

**sitrex**®  
Spa

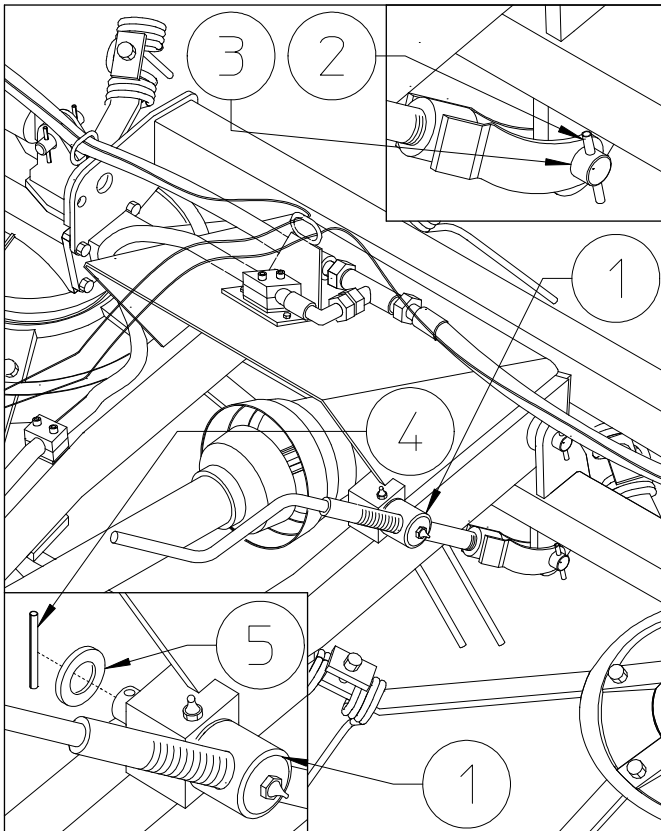
**ASSEMBLY, USE AND MAINTENANCE  
SPARE PARTS LIST  
ADJUSTMENT KIT FOR RT/5200-5800**

**PART NO 250.776**



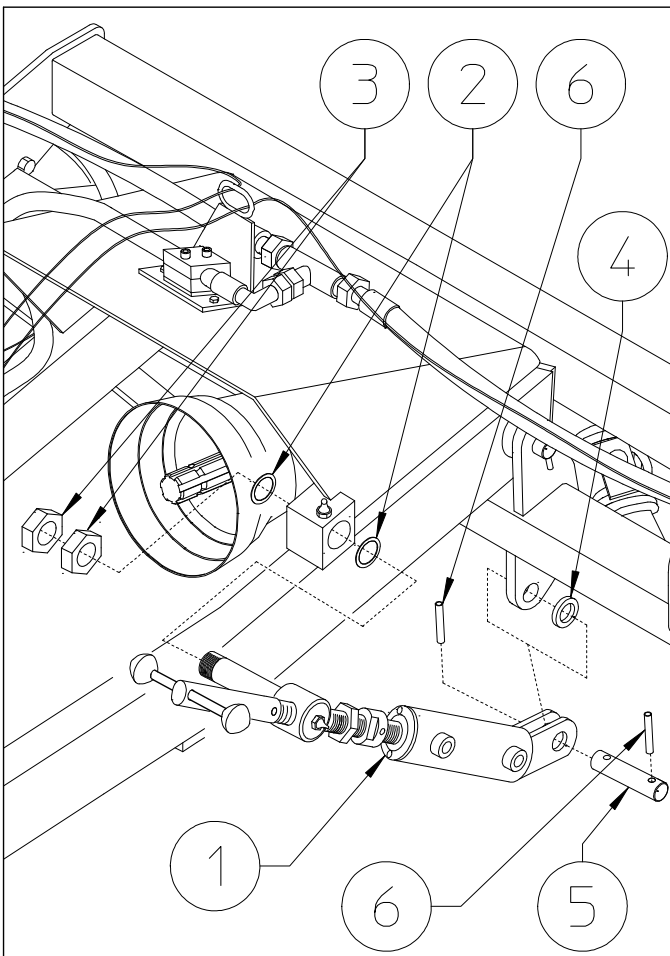
07/2015

## ADJUSTMENT KIT ASSEMBLY



1)  
To assemble the adjustment kit on a tedder, first the manual adjustment link 1 must be removed.

Note: keep in mind the danger resulting from the removal of the link 1, because once the machine no longer has the connection between the drawbar and the rear part of the frame, it tends to open out, constituting a potential serious danger. Stabilize the parts. At this point, to remove the adjustment link 1, it is necessary to remove the pins 2 and the pin 3 on the fork side and pin 4 and washer 5 on the adjustment screw side.



2)  
Fasten the adjustment screw part of the cylinder 1 onto the drawbar using shims 2 and nuts 3. Fasten the fork part of the cylinder to the frame using shim 4, pin 5 and spring pins 6.

Note: shim 4 goes on the side shown in the drawing.

In this step, you will use:

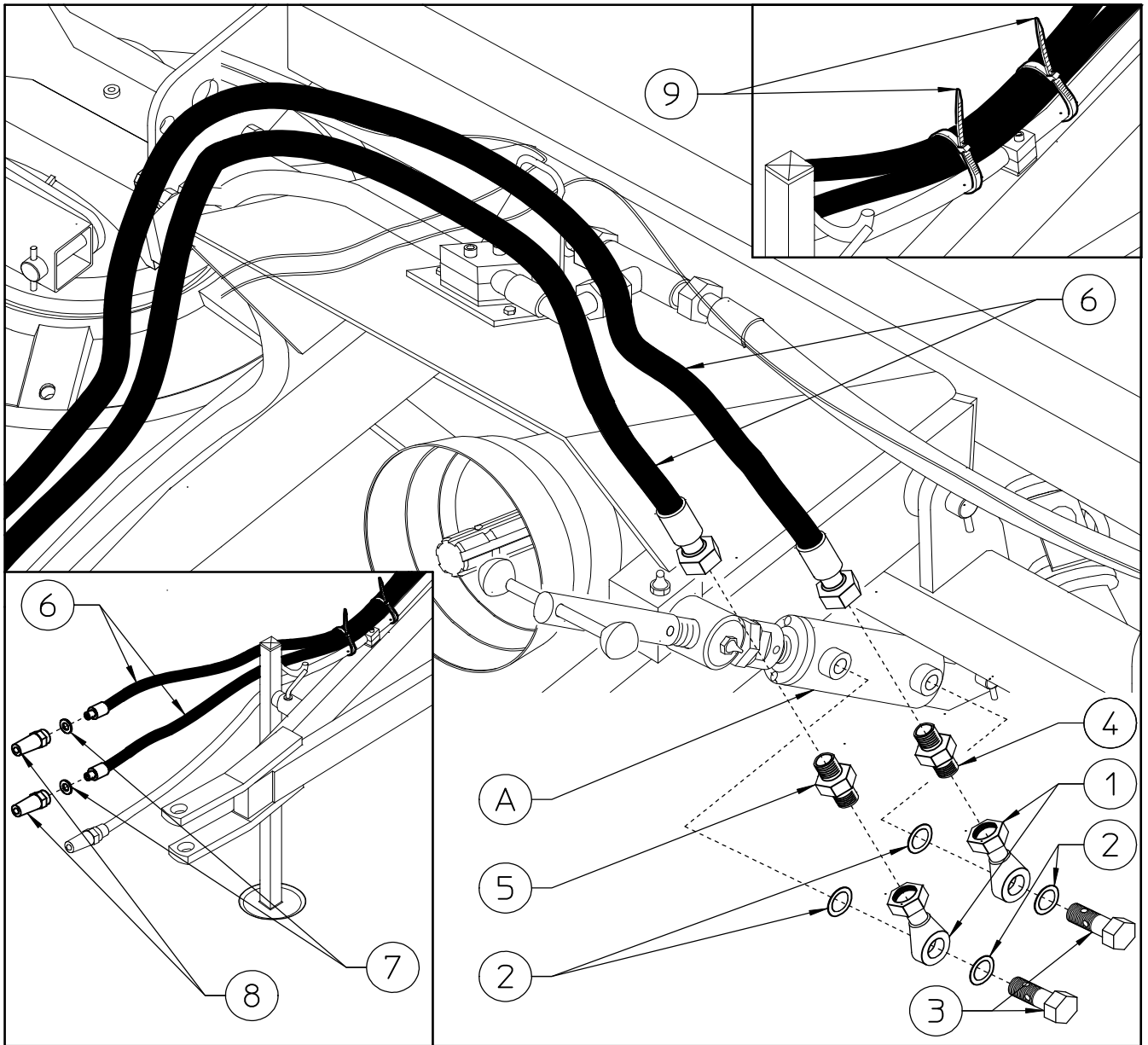
Item 2: 2 shims  $\varnothing 30.5-40 \times 1$   
( $\varnothing 1.2''-1.57'' \times 0.039''$ )

Item 3: 2 nuts M30

Item 4: 1 shim  $\varnothing 20.5-40 \times 6$   
( $\varnothing 0.81''-1.57'' \times 0.24''$ )

Item 5: 1 pin  $\varnothing 20 \times 70$   
( $0.79'' \times 2.76''$ )

Item 6: 2 spring pins  $\varnothing 6 \times 35$   
( $0.24'' \times 1.38''$ )



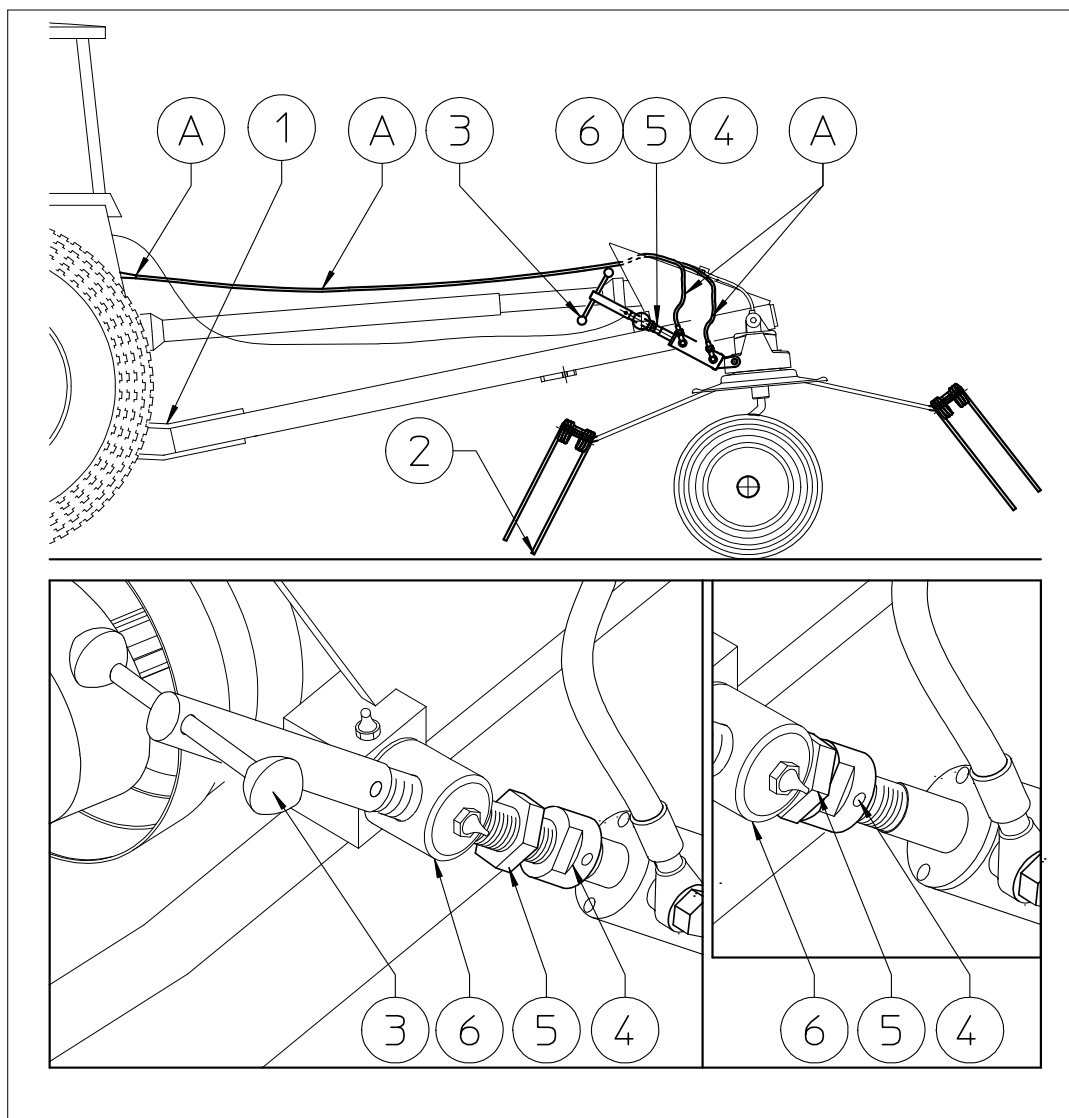
3) Connect the fittings 1 to the cylinder A using washers 2 and screws 3. Connect the reducer flow 4 to the fitting 1. Connect the nipple 5 to the fitting 1. Connect the hoses 6 to the reducer flow 4 and nipple 5. Extend hoses 6 along the drawbar until it reaches the front part. Lock the hoses 6 with clips 9. Apply the washers 7 and rapid couplings 8 to the hoses 6.

In this step, you will use:

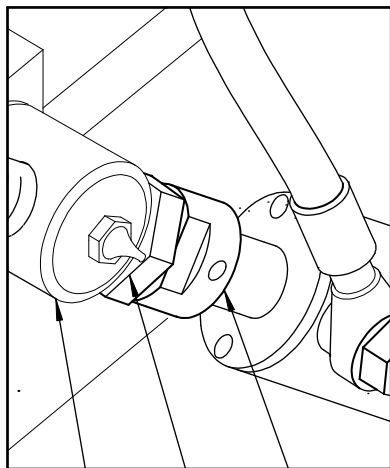
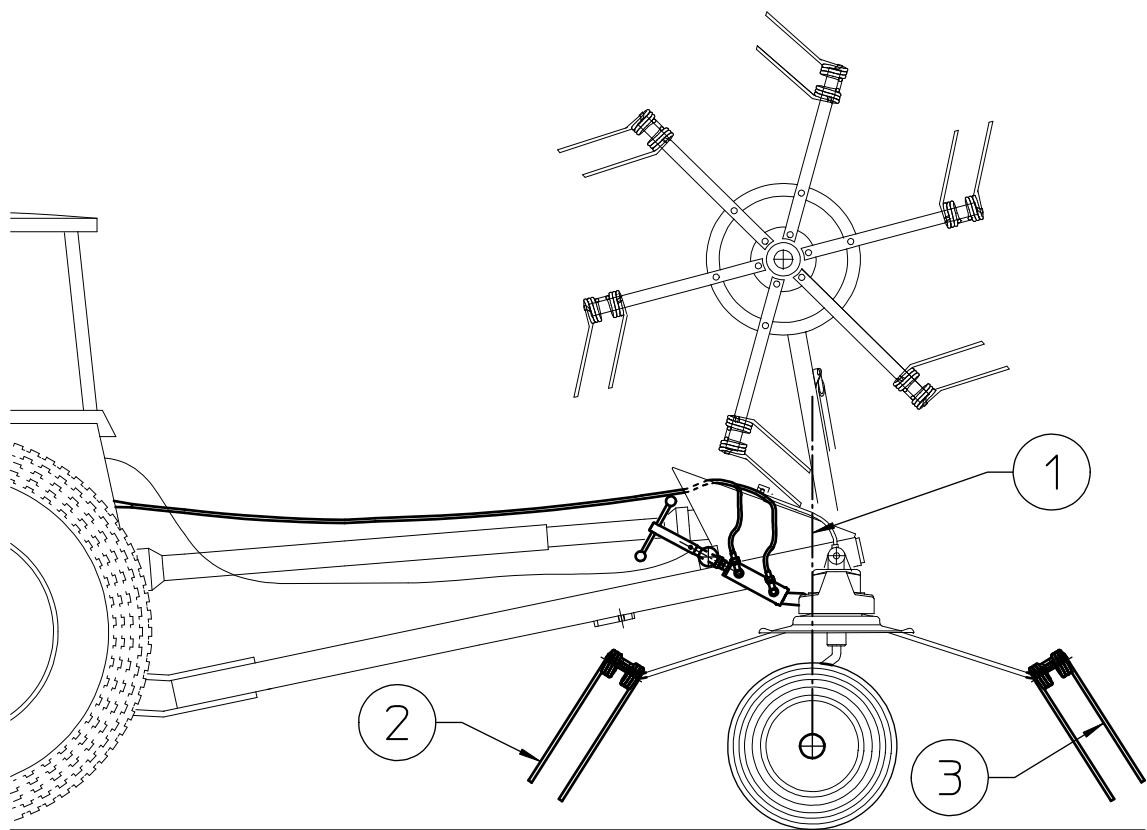
- Item 1: 2 fittings 3/8"
- Item 2: 4 washers 3/8"
- Item 3: 2 screws 3/8"
- Item 4: 1 reducer flow 3/8" x 0,8mm
- Item 5: 1 nipple 3/8" – 3/8"
- Item 6: 2 hoses 3/8" l. 3500-138"
- Item 7: 2 washers 1/2"
- Item 8: 2 rapid couplings 1/2"
- Item 9: 8/10 clips

## Instructions for use and adjustments

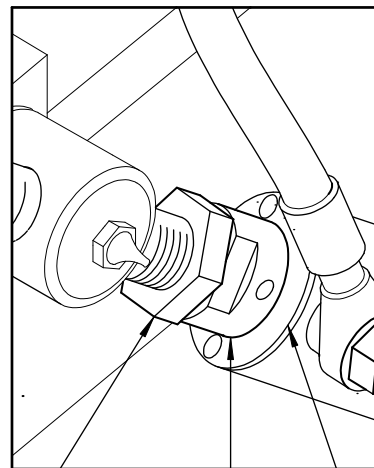
Connect the hoses A the tractor hydraulic couplings. Now send oil to the leveling cylinder and adjust the machine according to your needs.



The attaching of the drawbar 1 to the tractor hitch already brings the machine into an initial position, and normally this makes it possible to make the adjustments required for the working and transport stages. Sometimes tractors that have a hitch that is too high or too low may cause the machine adjustment to be unsatisfactory. If this is the case, take appropriate countermeasures. If the drawbar 1 is hooked to the bar of the tractor lift, the height can be adjusted at any time and therefore adjustments to the machine are easier. Normally you have good working conditions when the tines 2 at the front of the machine brush against the ground. If after the machine has been put in the working position the tines 2 are too far from the ground or dig too deep into the ground, make the proper adjustments using the lever 3. Before moving lever 3, the bush 4 and the nut 5 must be moved away from the joint pin 6 so as to allow the movement of the adjustment screw connected to the lever 3. Now move lever 3 to bring tine 2 so that it brushes against the ground. At this point bring nut 5 back into contact with joint pin 6 and bush 4 into contact with nut 5. Before tightening them to each other, make the adjustments in the next step.



6 5 4

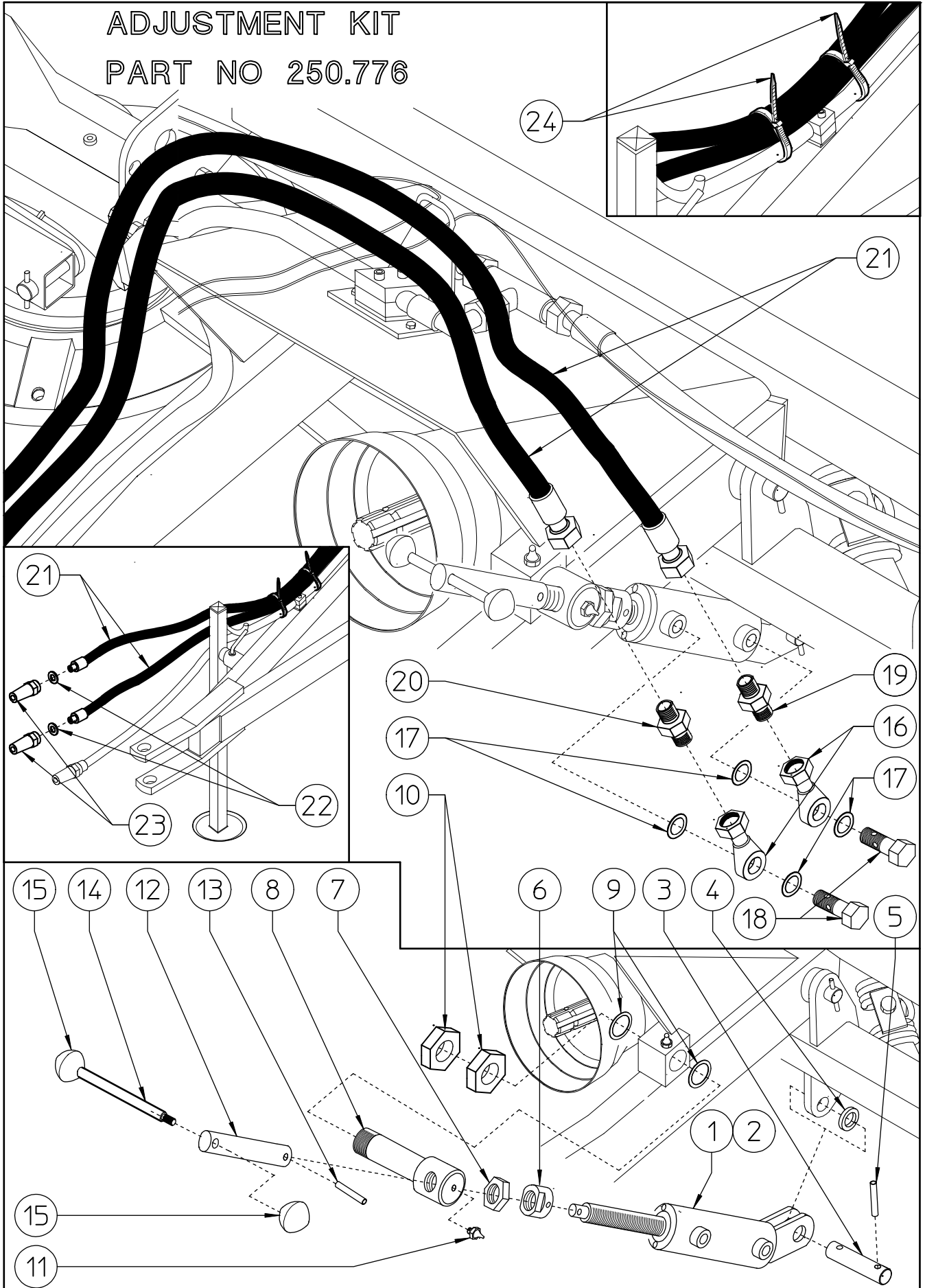


5 4 7

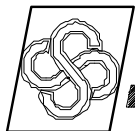
Now, sending oil from the tractor hydraulic circuit, raise the side rotors 1. The correct transport position (or maneuvering position when in the field) is when tine 2 at the front of the machine and tine 3 at the back are approximately the same distance from the ground. Note: for reasons of stability, the weight of the machine with regard to wheel axle A must always be unbalanced with more weight at the front, to avoid having the machine tip backwards when it is detached from the tractor due to it being heavier at the back. Therefore it must be unbalanced toward the front even if tine 2 is slightly closer to the ground than tine 3. When the correct transport position is reached, bring bush 4 into contact with the front face of cylinder 7, bring nut 5 into contact with the bush 4 and tighten them together. With this adjustment the machine is ready for working and for transport.

# SPARE LIST

ADJUSTMENT KIT  
PART NO 250.776



ADJUSTMENT KIT FOR RT/5200-RT/5800 PART NO 250.776				
ITEM	Q.ty	PART NO	DESCRIPTION	NOTE
1	1	230.090	CYLINDER	
2	1	620.022	SET OF GASKET	
3	1	220.828	PIN	
4	1	230.018	SHIM	
5	2	600.538	SPRING PIN (ø6x35)	
6	1	230.130	BUSH	
7	1	620.465	NUT (M27 UNI 5589)	
8	1	230.129	PIN	
9	2	200.273	SHIM	
10	2	610.813	NUT (M30 UNI 5589)	
11	1	600.124	GREASE NIPPLE M6	
12	1	230.128	BUSH	
13	1	620.468	SPRING PIN (ø8x30)	
14	1	230.127	LEVER	
15	2	620.464	KNOB	
16	2	630.315	FITTING 3/8"	
17	4	620.452	WASHER (3/8")	
18	2	600.040	SCREW 3/8"	
19	1	200.192	REDUCER FLOW (3/8"-3/8")	
20	1	600.270	NIPPLE 3/8" - 3/8"	
21	2	640.173	HOSE 3/8" L.3500mm-138"	
22	2	630.048	COPPER WASHER (1/2")	
23	2	600.273	RAPID COUPLINGS 1/2"	
24	10	620.039	CLAMP	



AGRICULTURAL MACHINERY  
**sitrex**® SpA

Zona Industriale-Viale Grecia, 8  
06018 TRESTINA-(Perugia)-ITALY  
Tel. +39.075.8540021-Telefax +39.075.8540523  
e-mail: [sitrex@sitrex.it](mailto:sitrex@sitrex.it) [www.sitrex.com](http://www.sitrex.com)

