



**HI-CAPACITY
RAKES**



STRONG | EFFICIENT | RELIABLE

HSMFGCO.COM

HD8100 SERIES

HDII RAKES



MODEL HD8117



MODEL HD8117



TRACTOR MOUNTED CONTROL BOX

One hydraulic remote along with the electrical control box controls all the functions of the rake. The rake wheels may be lifted independently left or right, or both at the same time, with the master switch.



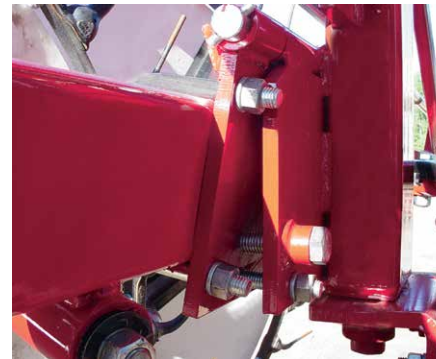
WINDROW WIDTH ADJUSTMENT

The windrow width can be adjusted hydraulically to a maximum of 72". Because of the offset of the rake wheel beams, there is no need for center kicker wheels.



FEATURES

- Adjustable height hitch.
- Heavy channel iron outer ring and 6 heavy angle iron gussets on each wheel for superior strength.
- UV treated poly wind panels and an over center wheel stop.
- 5" x 7" overhead mainframe. Each side opens independently.
- Overhead hydraulically adjustable frame with a shorter wheelbase which results in more maneuverability.
- Adjustable rake wheel ground pressure.
- Heavy-duty tapered roller bearings are used in each HDII rake arm.
- Standard anti-wrap hay guards.



TILT RAKE WHEELS UP TO 10°

Rake beams with a variable adjustment to set the rake wheels straight or in a tilted setting up to 10° (patented).



RAKE WHEELS ROLL SMOOTHLY OVER TERRAIN

Compression springs with a rubber dampener on the inside allow each rake wheel to roll smoothly over the terrain.

TRANSPORT LOCK

The rake wheel lift pipes feature a rake wheel lock for transportation at the back of the rake.

OTHER OPTIONS

- Single wheel extension kit
- 2-wheel add-on kit



HD8117				
Number of wheels	17	18	19	20
Wheel diameter	60 inch			
Teeth per wheel	36			
Tooth diameter	7.5 mm			
Transport width	12' 3"	12' 3"	13' 3"	13' 3"
Transport length	28' 3"	30' 9"	30' 4"	32' 9"
Windrow width adjustment	up to 72"			
Raking width	up to 30' 3"	up to 31' 3"	up to 33' 3"	up to 34' 3"
Raking wheel hubs	Tapered bearings			
Number of transport wheels	4			
Hitch jack	Standard			
Gauge wheels	IF240 / 80R15IMP			
Transport wheels	IF240 / 80R15IMP			
Safety Chain	10,100 Lb. Standard			

