



# ***HI-CAPACITY and FLEX FRAME V-RAKES***



---

***STRONG | EFFICIENT | RELIABLE***

---

**HSMFGCO.COM**



# HC4100 & HC5100 SERIES

## HI-CAPACITY RAKE



MODEL HC4112



### FEATURES

- Adjustable hitch height.
- Raking wheels positioned ahead of the rake arms, main frame beams, and transport wheels to handle heavy crop.
- Ground pressure adjustment to fine-tune rake wheels to fit varying conditions.
- Round backbone delivers independent articulated rake beams a flexibility of 3' up or 3' down.
- Hand crank adjustment for windrows from 38" to 58" wide for 12-wheel models and 46" to 66" for the 14-wheel.
- Raking widths hydraulically adjusted up to 24' on the 12-wheel model and 28' on the 14-wheel models.
- HC4100 Series comes with 55" rakes wheels and the HC5100 series comes with 60" rake wheels



### SMOOTH OPERATION

Rake arms feature bearings to deliver longer life, smooth operation, and less wear than rakes with bushings.



# ES KES



**MODEL HC4114**



### **SMOOTH, LEVEL RIDE**

Rear limited oscillating offset tandem transport wheels ensure a smooth, level ride, even over irrigation tracks.

Rear tandem wheels are optional on the HC4112.



### **RAKE HEAVY CROP**

Designed with a high, wide end of frame, there are no hang-up points or restrictions when raking the heaviest of hay crops.



### **HC5100 SERIES**

Large 60-inch diameter rake wheels turn slower for less wear and deliver more capacity. Rake wheels supported by low maintenance beehive-style springs.

A large diameter rake wheel hub is used for added strength to the rake wheel dish.



### **ADJUSTABLE BRAKE BAND**

HC4100 Series: An adjustable brake band on top of the front spindle keeps the front gauge wheels from spinning in rough conditions.

HC5100 Series: An adjustable brake band on the four front gauge wheels can be easily adjusted to field conditions.



**MODEL HC5114**

### **OTHER OPTIONS**

Highway lighting kit

2-wheel add-on kit to convert to 16-wheel rake (HC4114, HC5114)

2-wheel center kicker assembly w/ hydraulic lift

Set of 15" front gauge wheels helps improve float over irrigation tracks on rough ground for HC4114

Wind panel kits for rake wheels

smooth operation



# HC7100 SERIES

## HI-CAPACITY RAKE



MODEL HC7116



### FEATURES

- Adjustable height clevis hitch.
- Hydraulic raise/lower independent rake wheel compression-style suspension.
- Single point rake wheel down-pressure adjustment on each rake beam.
- Rear limited oscillating offset tandem transport wheels ensure a smooth, level ride, even over irrigation tracks.
- Round backbone delivers independent articulated rake beams a flexibility of 3' up or 3' down.
- **60-inch diameter heavy-duty rake wheels** with 18 sets of rubber mounted teeth and UV treated poly wind panels turn slower for less tooth wear and better handling of tough crops such as corn stalks or high tonnage forage.



### REAR WINDROW WIDTH ADJUSTMENT

Rear windrow width is adjusted by a hydraulic cylinder and third remote on the tractor.



# ES KES



**MODEL HC7116**

### MANUAL TRANSPORT LOCKS

The locks are standard for each rake beam.



### DISC-STYLE BRAKES

The brakes on each front gauge wheels can be easily adjusted for field conditions and road travel.



### MAX RAKING WIDTH

From the center of the front left rake wheel to the center of the front right rake wheel is 25' on the standard rake and **27' 3"** with a **2-wheel extension**. Raking widths can be hydraulically adjusted in any position up to the predetermined raking width.



### INTERRUPTER 8000

Available with the optional **INTERRUPTER 8000** corn stalk breaker



### OTHER OPTIONS

- |  |
|--|
| 2-wheel add-on kit                           |
| Highway & work lighting                      |
| Two additional front rake beam caster wheels |
| 3-wheel center kicker assembly               |
| <b>INTERRUPTER 8000</b> corn stalk breaker   |
| 2-point hitch                                |

er — requires a



# FF6100 SERIES

## FLEX-FRAME RAKE



MODEL FF6116



### FEATURES

- **Flex-Frame Benefits:** The Flex-Frame rake features the raking wheels positioned ahead of the rake arms, main frame beams, and transport wheels. Coupled with a high and wide end of frame, **there are no hang-up points or restrictions when raking the heaviest of hay crops!**
- Adjustable hitch height
- The rake arms feature 2 roller bearings on each end of the arm for long life, smooth operation, and less wear than rakes with bushings.
- Low maintenance beehive-style springs support the large 60" rake wheels.
- The U-joint/ball joint design of the rake beam arms allows the Flex-Frame rakes to be the most versatile on the market



### LARGE 60" DIAMETER RAKE WHEELS

Features 60" wheel wind panels



# ES KES



**MODEL FF6116**



### ADJUSTABLE SCREWS

Adjustable screws on each rake beam allows the operator to fine-tune the rake wheel down pressure to fit varying conditions.



### SMOOTH, LEVEL RIDE

A limited oscillating offset tandem transport wheels assure a smooth, level ride, even over irrigation tracks.

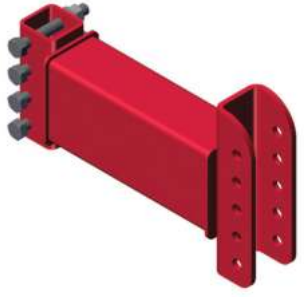


### SET PREDETERMINED RAKING WIDTHS

Moving the spring loaded T-pin allows you to set predetermined raking widths. Raking widths can be hydraulically adjusted up to the predetermined raking width.



**OPTIONAL**



**OPTIONAL**



**MODEL FF6120**

### OTHER OPTIONS

Highway & work lighting
2-wheel add-on kit for FF6118/FF6120
Hydraulic rear width adjustment
Clevis hitch extension
3-wheel center kicker assembly
2-point hitch



	<b>HC4112</b>	<b>HC4114</b>	<b>HC5114</b>	<b>HC7116</b>	<b>FF6116</b>	<b>FF6118</b>	<b>FF6120</b>
Number of wheels	12	14	14	16	16	18	20
Wheel diameter	55"			60"			
Teeth per wheel	40			36	40		
Tooth diameter	7 mm			7.5 mm			
Transport width	8' 6"	8' 6"	8' 10"		10' 6"	11' 6"	
Transport length	24' 6"	27' 3"			32' 7"	34' 8"	37' 6"
Windrow width adjustment	38" - 58"		46" - 66"		3' - 5'		
Raking width	up to 24'	up to 28'		up to 27'	up to 32'	up to 35' 6"	up to 38' 6"
Raking wheel hubs	Tapered bearings		Ball bearings	Tapered bearings	Ball bearings		
Number of transport wheels	4	6	8	6	8		
Hitch jack	Standard						
Gauge wheels	6.7 x 15			IF240 / 80R15IMP	9.5L x 15	11L x 15	
Transport wheels	6.7 x 15			IF240 / 80R15IMP	9.5L x 15	11L x 15	
Weight	3,500 Lbs.	3,800 Lbs.			5,750 Lbs.	7,894 Lbs.	8,224 Lbs.
Safety Chain	10,100 Lb. Standard						



**PROUDLY BUILT IN MARSHFIELD, WISCONSIN :: HSMFGCO.COM**

